

THE *Enclave*
ON COLLIER.

JW
COLLECTION

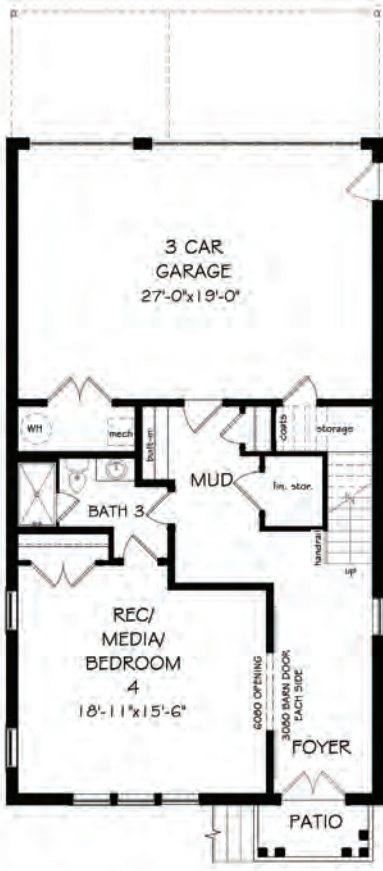


THE HAMPTON
HOMESITE 2

REFINED ATLANTA LIVING

The Hampton, Homesite 2
 2084 Timball Rd NW Atlanta, GA 30318
 4 Bedrooms 4.5 Bathrooms | 3,883 Sq. Ft.

The Hampton plan on Homesite 2 is one of the final opportunities to own at The Enclave on Collier. This home boasts an abundance of luxury that stretches across three levels of opulent living space. Enter your immaculate foyer leading up to an oversized great room, dining space and gourmet chef's kitchen. This home features multiple spaces to relax and unwind including a spa-inspired owner's suite bath, rear covered deck and front covered balcony as well as a finished terrace-level media room. Homeowners will also enjoy this home's elevator-capability and spacious three-car garage. The Hampton plan was thoughtfully designed and crafted by John Wieland and his experienced team at the JW Collection.



TERRACE LEVEL



FIRST FLOOR



SECOND FLOOR



Luxury Features and Finishes



Centered on a One-Acre Park



Neighborhood Pavilion with Fireplace



Gourmet Chef's Kitchen



50
YEARS

BUILDING BETTER HOMES

The JW Collection is the legacy business of John Wieland and represents his 50-year commitment to building better homes, a promise he has kept for more than 30,000 purchasers.

Architectural character both inside and out has been a 50-year fundamental for John. Not only is he involved in the design of new homes on the drafting board, but he walks the prototype for each plan and makes the necessary changes to get every detail just right, both inside and out.

“Combining decades of experience, our JW Collection team ensures the best in your home, every step of the way. From our neighborhood sales team to help you find the right home to our veteran team of project managers, builders and interior designers who bring it all to life, you can rest assured knowing our team is your team and is committed to your personal home and satisfaction.”

John



770-809-6016 • jwcatlanta.com
1131 Cordia Ave, Atlanta, GA 30318

