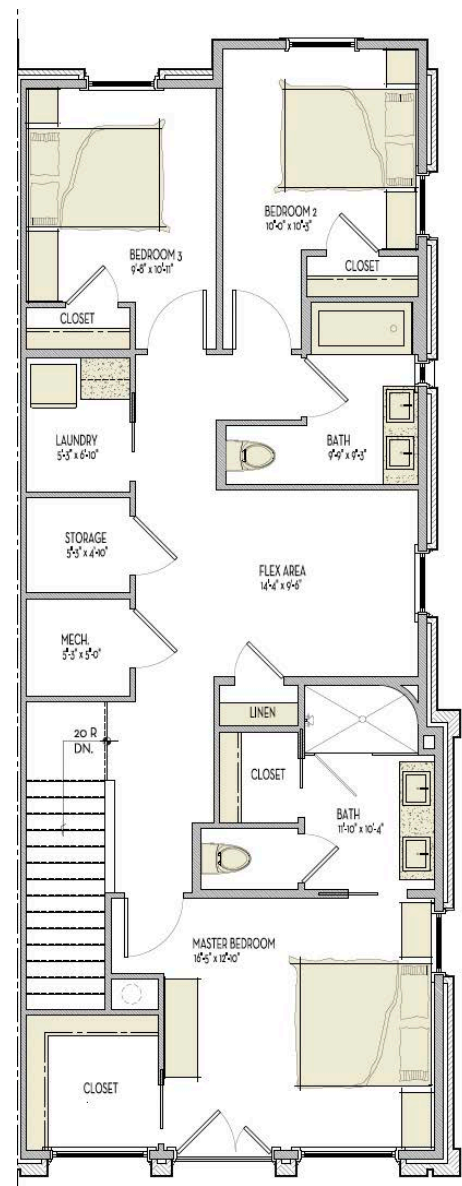
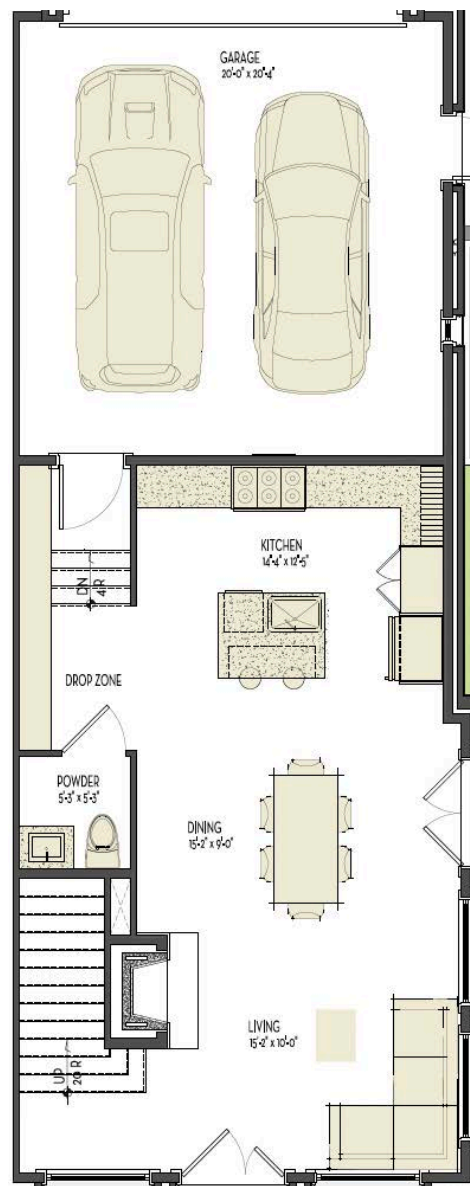


Palmyra

3 Bedrooms & 2.5 Baths | 1,864-2,115 sq. ft.*

- 10' ceilings on main
- Open floor plan
- Spacious kitchen with breakfast bar
- Living area with fireplace
- Private owner's suite
- Trilith green building certification
- Geothermal HVAC system
- Prewired for electric vehicle charging station
- Professional landscaping



*Sample Floorplan.

678.519.1008 | Trilith.com