



TRILITH

Sales & Leasing Office: 290 Heatherden Avenue, Fayetteville, GA 30214

The Wembley

The well-planned Wembley Village home features an owner's suite on main, 4 bedrooms and 4.5 bathrooms. The main level offers 10' ceilings, open living room with fireplace, dining area, gourmet kitchen with walk-in pantry and scullery, large laundry room, sitting area and well-appointed owner's suite with spacious walk-in closet. The second floor features 2 additional bedrooms with en-suite bathrooms, flex area and extra storage with additional bedroom and bathroom optional. 2-car attached garage. Each level of home is elevator capable.

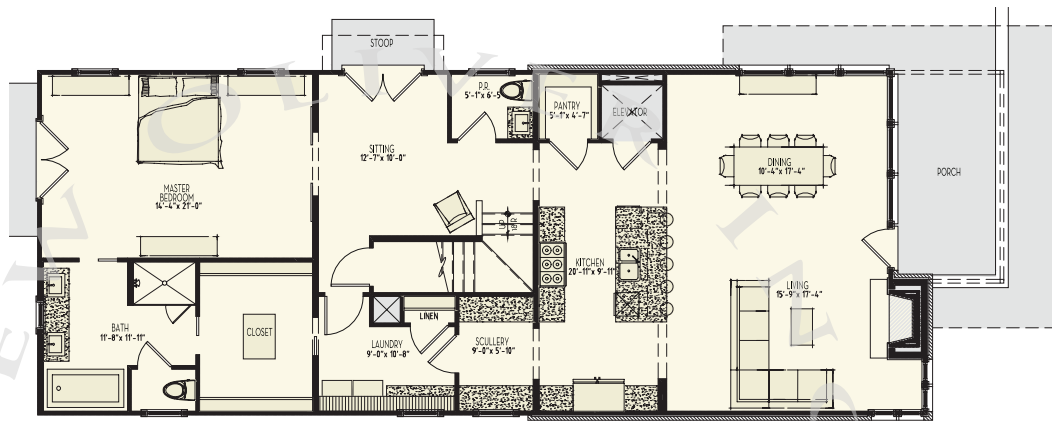


678.519.1008 | Trilith.com

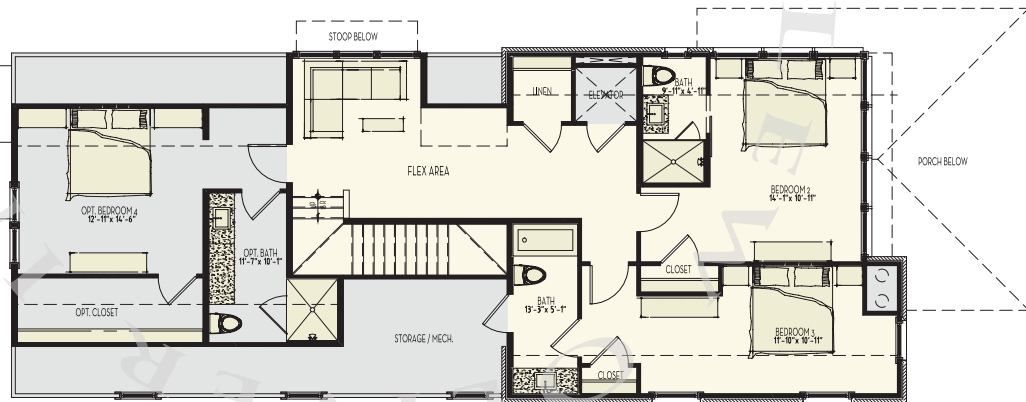
The Wembley

4 Bedrooms & 4.5 Baths | 3,149 sq. ft.

- Owner's suite on main
- 10' ceilings on main
- Gourmet kitchen with scullery
- Fireplace
- Lower level with optional finishes
- 2-car attached garage
- Trilith green building certification
- Geothermal HVAC system
- Prewired for electric vehicle charging station
- Professional landscaping



1st Floor



2nd Floor

678.519.1008 | Trilith.com