



TRILITH

Sales & Leasing Office: 290 Heatherden Avenue, Fayetteville, GA 30214

## The Sheldon

The Sheldon Village home with welcoming front terrace has 4 bedrooms and 4.5 bathrooms. The main floor offers 10' ceilings, a spacious dining room, open gourmet kitchen with breakfast bar, adjacent breakfast nook, butler's pantry and walk-in pantry, living room with fireplace opening to porch and private guest bedroom with en-suite bathroom. Upper level has an owner's suite with large walk-in closet, large laundry room, two additional bedrooms with en-suite bathrooms and flex living space.



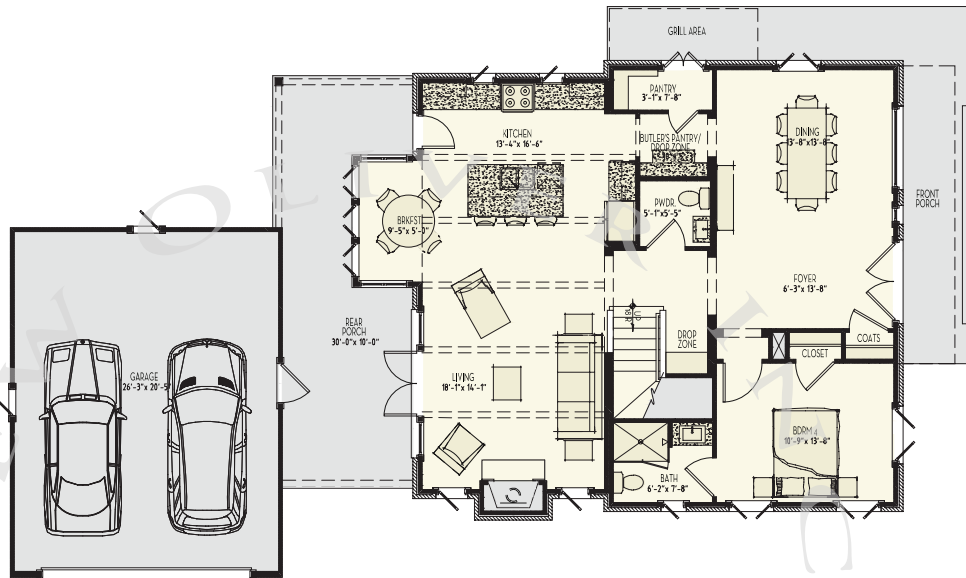
678.519.1008 | Trilith.com



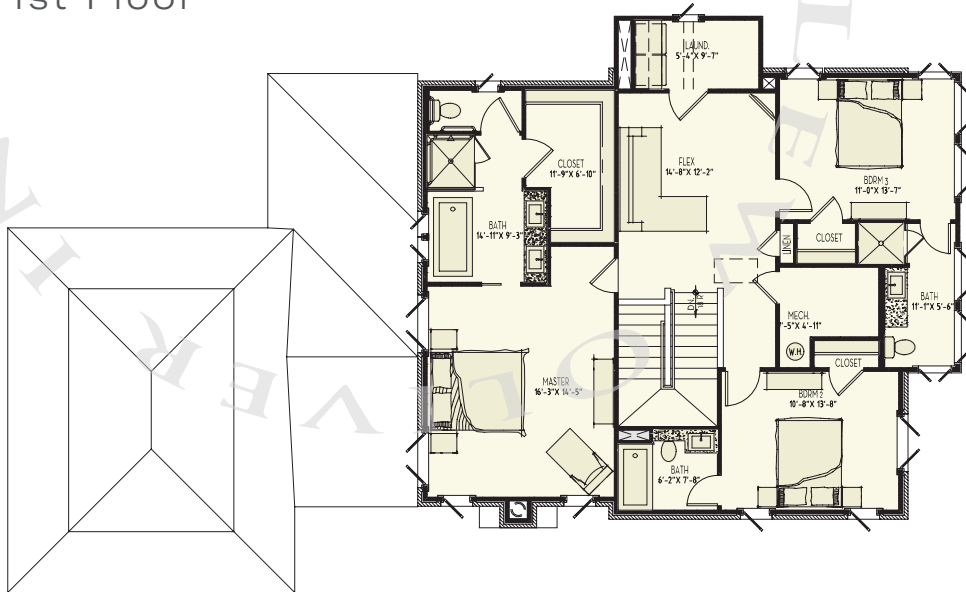
# The Sheldon

4 Bedrooms & 4.5 Baths | 2,506 sq. ft.\*

- 10' ceilings on main
- Gourmet kitchen
- Fireplace
- Front terrace
- Elevator capable
- 2-car detached garage - optional
- Trilith green building certification
- Geothermal HVAC system
- Prewired for electric vehicle charging station
- Professional landscaping



1st Floor



2nd Floor

\* sq. ft. various upon elevation

678.519.1008 | Trilith.com