



TRILITH

Sales & Leasing Office: 290 Heatherden Avenue, Fayetteville, GA 30214

The Royston

The impressive Royston Estate home boasts 3,820 square feet, 4 bedrooms, 4.5 bathrooms with owner's suite on main. The main floor also offers 10' ceilings, open living area with fireplace, separate dining area, gourmet kitchen with breakfast bar, large walk-in pantry, built-in desk and convenient laundry. Beyond the kitchen is the well-appointed master suite with impressive bathroom and walk-in closet. The second floor full bathroom and cozy flex space. 3-car attached garage enters into the main level with optional bonus space over the garage.



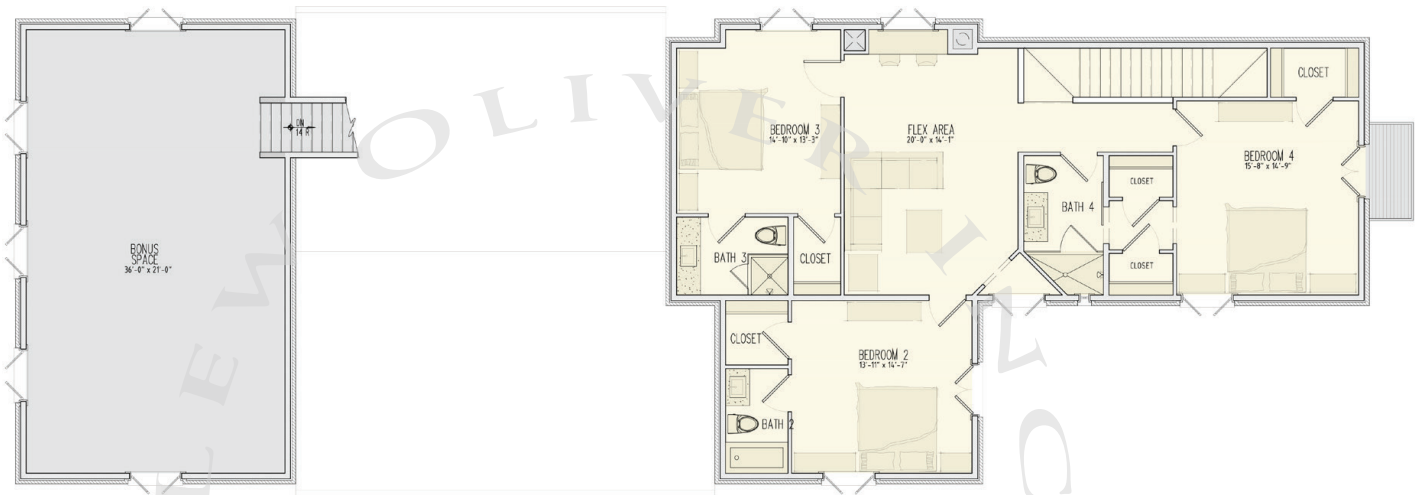
678.519.1008 | Trilith.com



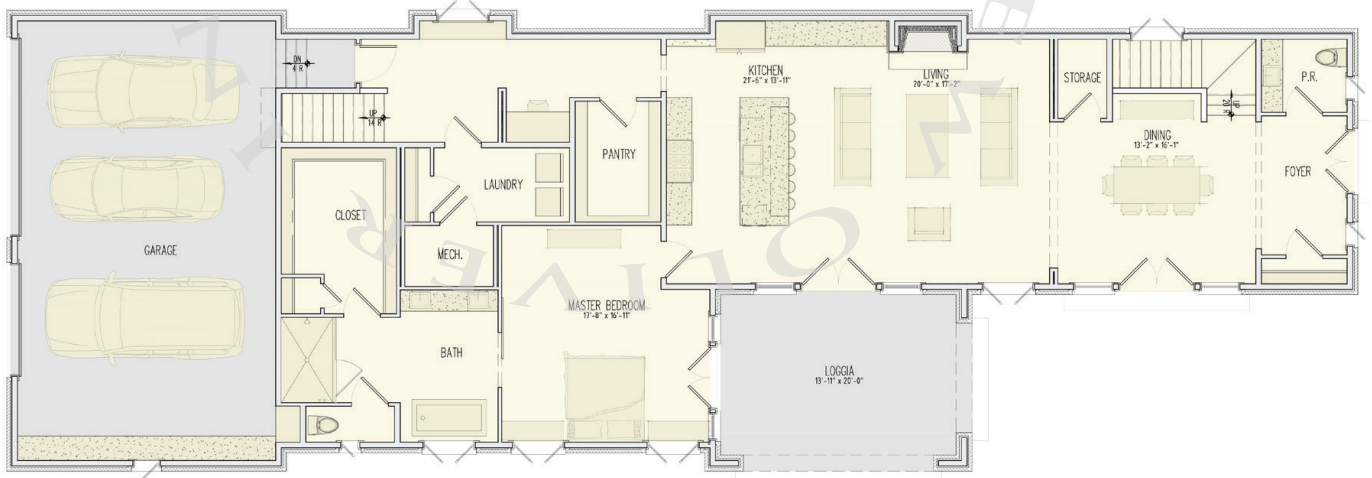
The Royston

4 Bedrooms & 4.5 Baths | 3,820 Sq. Ft.

- Owner's suite on main
- 10' ceilings on main
- Gourmet kitchen with walk-in pantry
- Fireplace
- Bonus space
- 3-car attached garage
- Trilith green building certification
- Geothermal HVAC system
- Prewired for electric vehicle charging station
- Professional landscaping



Second floor



First floor

678.519.1008 | Trilith.com