



TRILITH

Sales & Leasing Office: 290 Heatherden Avenue, Fayetteville, GA 30214

The Neville

The Neville Estate home offers a spacious 3,544 square foot, 5 bedroom, 5.5 bathroom main house and 859 square foot, 2 bedroom, 2 bathroom guest cottage. The house features 10' ceilings on the main level, large living room with fireplace, spacious kitchen with breakfast bar, walk-in pantry and adjacent dining area. Just off the dining area is a guest bedroom that could be flex space with an en-suite bath. The second floor offers a large owner's suite with walk-in closet, two additional bedrooms and bathroom, convenient laundry and flex space. The two-car garage conveniently enters into the main level. The guest cottage features master on main with 10' ceilings, kitchenette with breakfast bar, living area, owner's suite and convenient laundry. Takes you to the second bedroom with en-suite bathroom and walk-in closet.



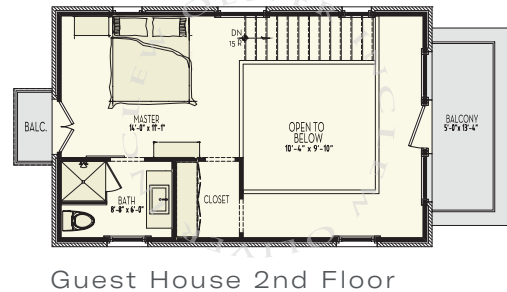
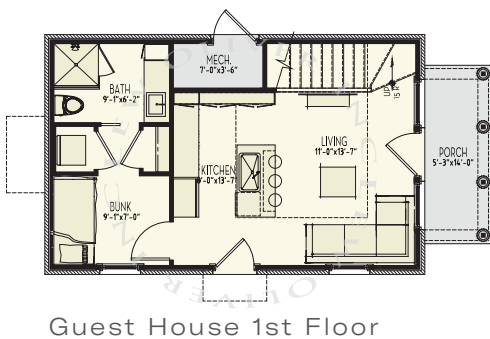
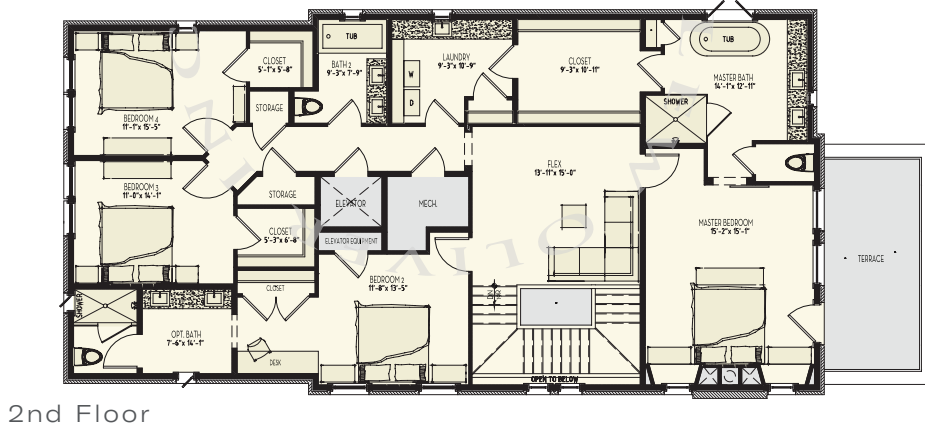
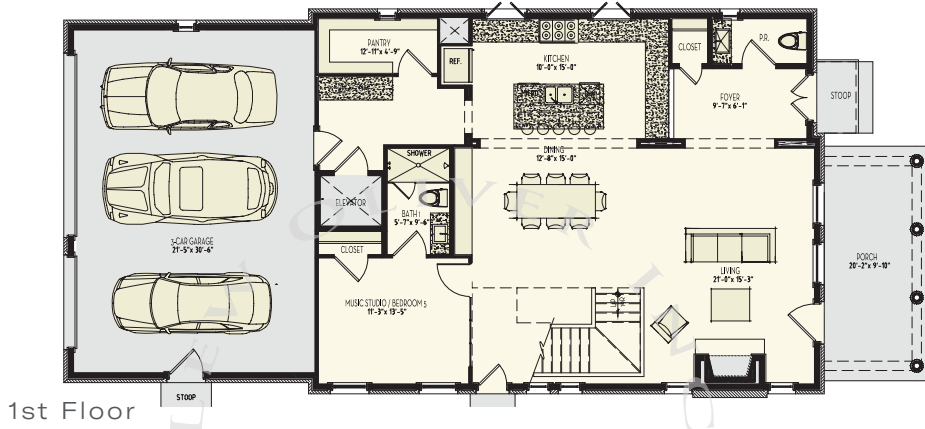
678.519.1008 | Trilith.com



The Neville

5 Bedrooms & 5.5 Baths | 3,544 sq. ft
 Guest House | 873 sq. ft.

- 10' ceilings on main
- Gourmet kitchen
- Fireplace
- Front and side porch
- Guest House
- 3-car attached garage
- Trilith green building certification
- Geothermal HVAC system
- Prewired for electric vehicle charging station
- Professional landscaping



678.519.1008 | Trilith.com