

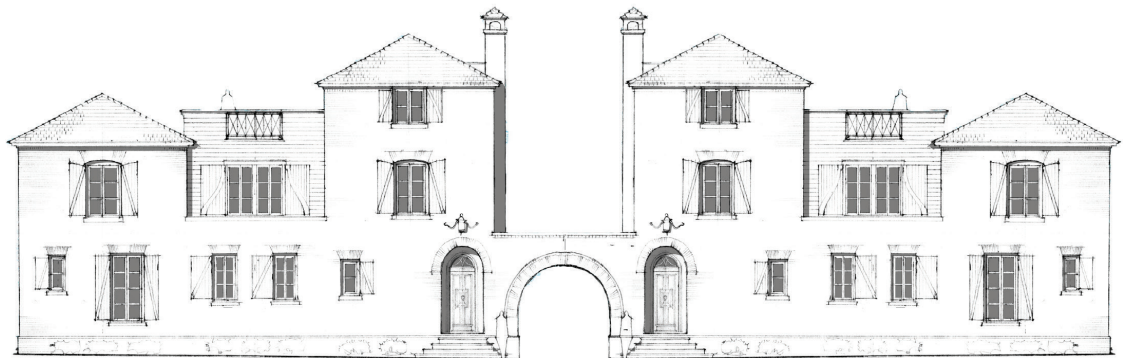


TRILITH

Sales & Leasing Office: 290 Heatherden Avenue, Fayetteville, GA 30214

The Marlow

The perfectly planned Marlowe Village home is 3,196 square feet with 4 bedrooms and 3 bathrooms. The main level offers 10' ceilings, open gourmet kitchen with walk-in pantry/scullery opens to outdoor patio, separate dining room with butler's pantry, and separate living room with fireplace. The second floor features a luxurious owner's suite suite, 2 additional bedrooms with Jack and Jill bathroom, and loft area. Two-car garage connects via breezeway. Each level of home is elevator capable.



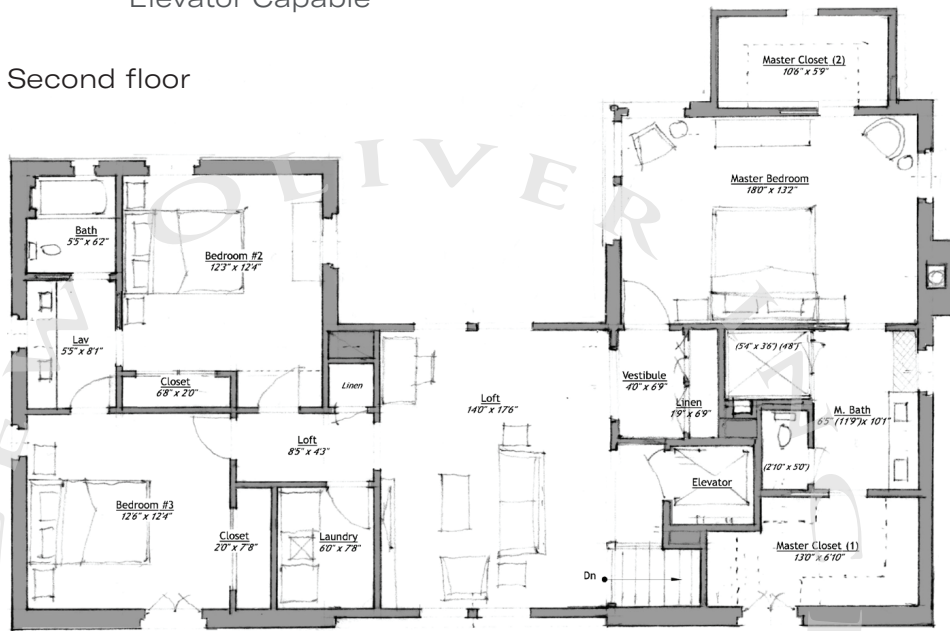
678.519.1008 | Trilith.com

The Marlowe

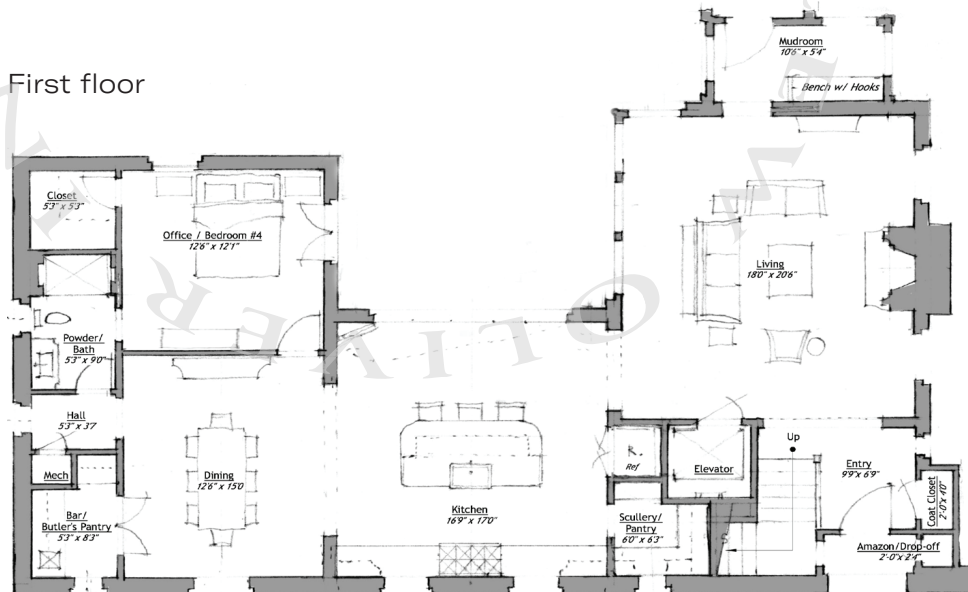
4 Bedrooms & 4 Baths | 3,198 sq. ft

- 10' ceilings on main
- Gourmet kitchen with breakfast bar and walk-in scullery/pantry
- Separate dining room with walk-in butlers pantry
- Separate living room with fireplace
- Mudroom
- Main level patio and rooftop deck
- Elevator Capable
- Attic level build-out optional
- 2-car garage attached via breezeway
- Trilith green building certification
- Geothermal HVAC system
- Prewired for electric vehicle charging station
- Professional landscaping

Second floor



First floor



678.519.1008 | Trilith.com