



TRILITH

Sales & Leasing Office: 290 Heatherden Avenue, Fayetteville, GA 30214

The Lund

The unique, 2 bedroom, and 2.5 bathroom Lund Cottage offers 10' ceilings on the main level, living room with fireplace, powder room, eat-in kitchen with spacious walk-in pantry. The second floor has a spacious owner's suite with walk-in closet second bedroom with en-suite bath and closet.

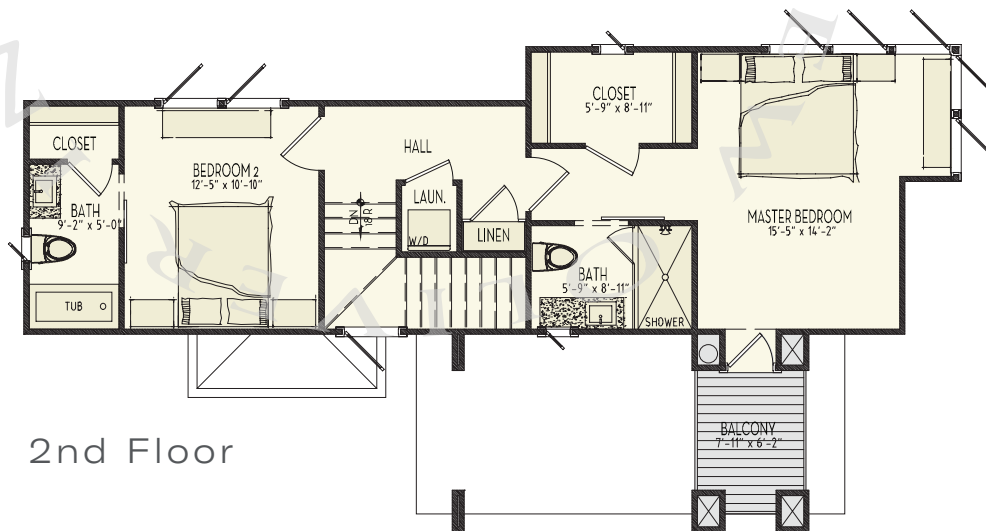
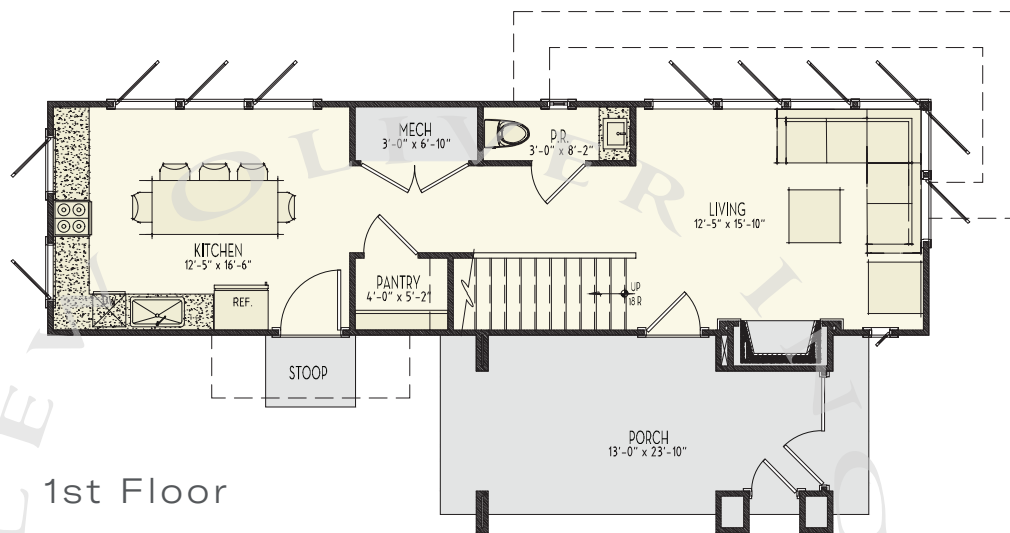


678.519.1008 | Trilith.com

The Lund

2 Bedrooms & 2.5 Baths | 1,374 sq. ft*

- 10' ceilings on main
- Open floor plan
- Gourmet eat-in kitchen
- Fireplace
- Covered porch
- Geothermal HVAC system
- Trilith forest green building certification
- Prewired for electric vehicle charging station
- Professional landscaping



678.519.1008 | Trilith.com * sq. ft. various upon elevation