



TRILITH

Sales & Leasing Office: 290 Heatherden Avenue, Fayetteville, GA 30214

The Holt

The charming, 2 bedroom and 2 bath Holt Cottage offers a spacious living area leading to a dining area and open eat-in kitchen with walk-in pantry and convenient laundry. Guest bedroom with en-suite bath is just beyond the kitchen. The second floor offers a private owner's suite and a flex area perfect for an office or living room.

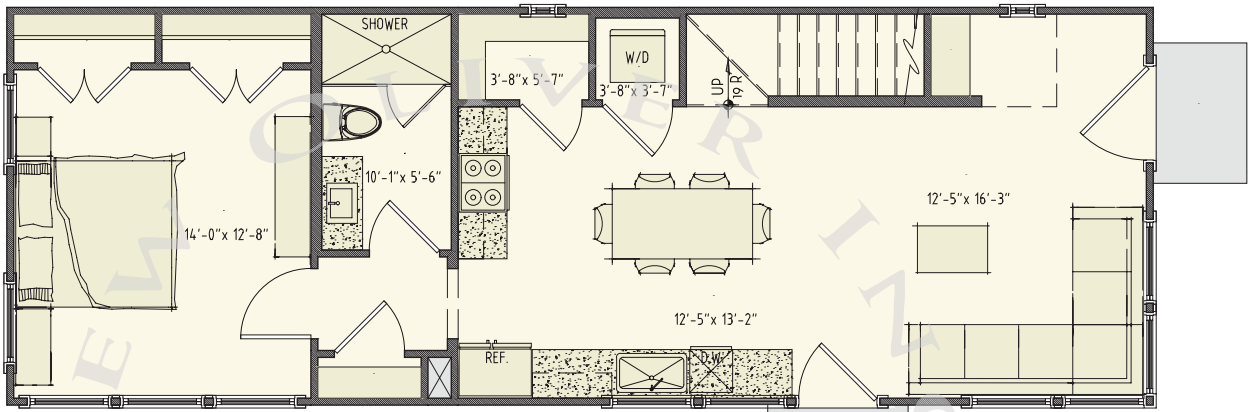


678.519.1008 | Trilith.com

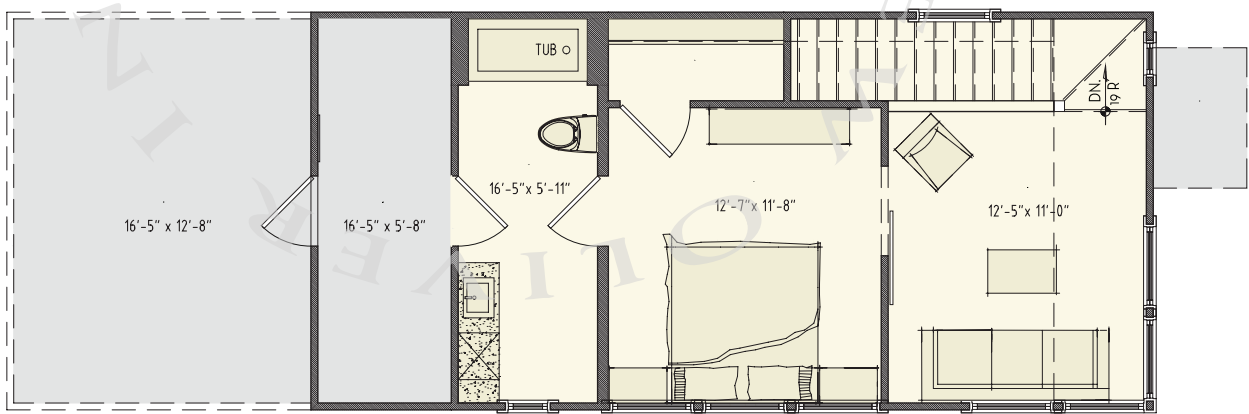
The Holt

2 Bedrooms & 2 Baths | 1,343 sq. ft.*

- Bedroom on main
- 10' ceilings on main
- Open floorplan
- Gourmet kitchen
- Trilith green building certification
- Geothermal HVAC system
- Prewired for electric vehicle charging station
- Professional landscaping



1st Floor



2nd Floor

* sq. ft. various upon elevation

678.519.1008 | Trilith.com