



TRILITH

Sales & Leasing Office: 290 Heatherden Avenue, Fayetteville, GA 30214

The Gale

The charming 2 bedroom and 2.5 bath Gale Cottage offers a front porch, spacious living area, a dine-in kitchen with pantry and convenient laundry. The second floor offers a private owner's suite and additional bedroom and bath.

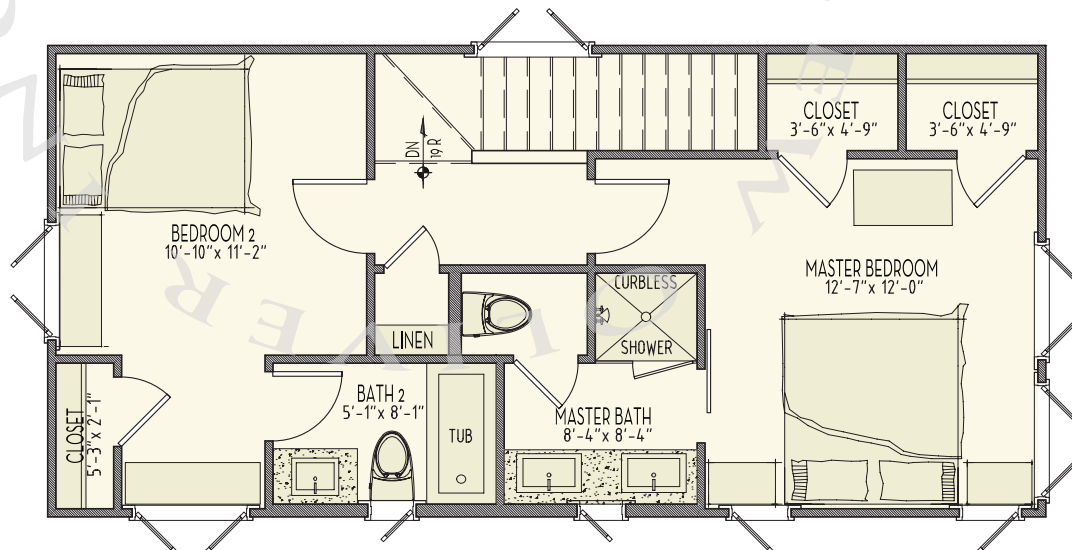
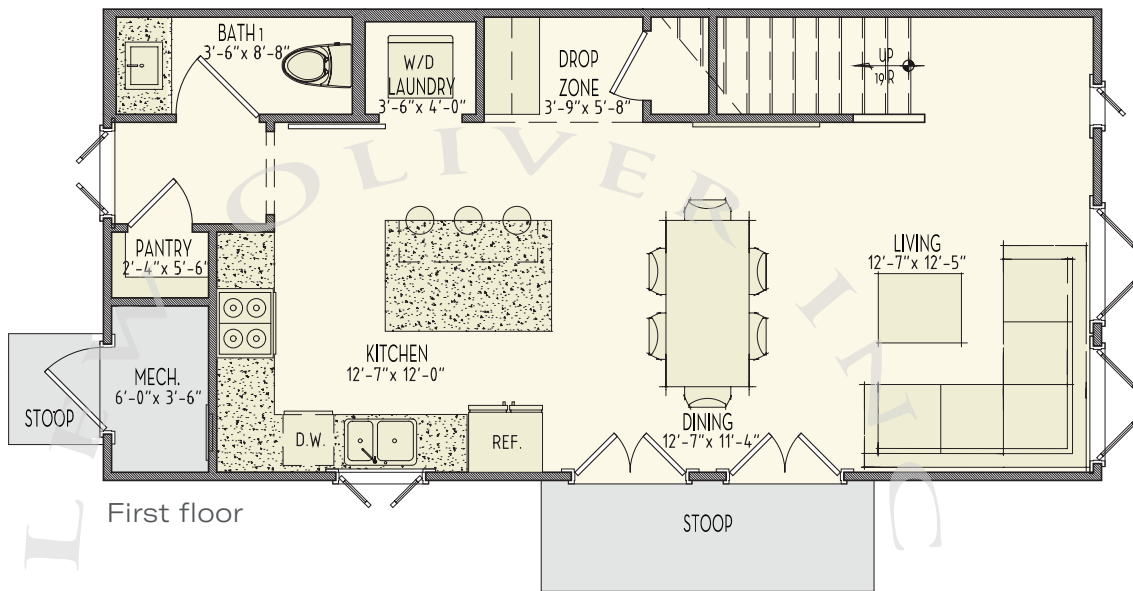


678.519.1008 | Trilith.com

The Gale

2 Bedrooms & 2.5 Baths | 1,200 sq. ft*

- 10' ceilings on main
- Open floor plan
- Gourmet kitchen
- Front porch
- Trilith green building certification
- Geothermal HVAC system
- Prewired for electric vehicle charging station
- Professional landscaping



* sq. ft. various upon elevation

678.519.1008 | Trilith.com