

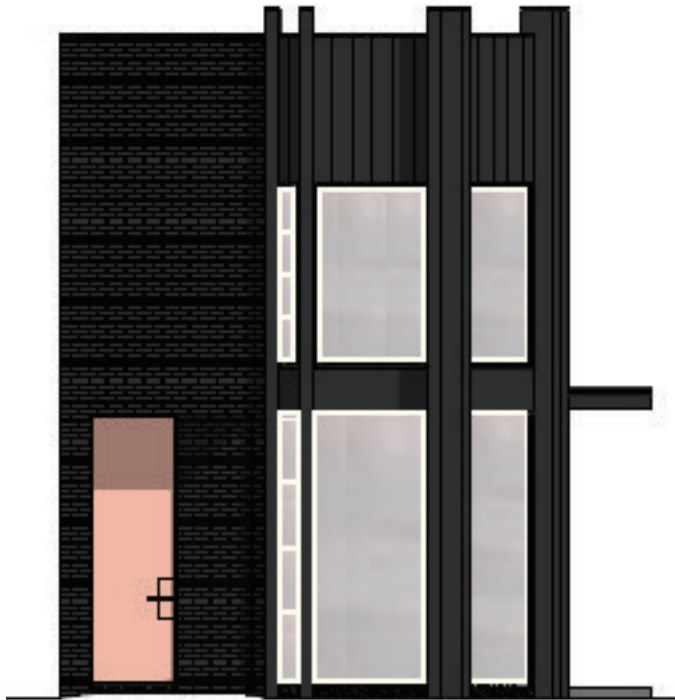


TRILITH

Sales & Leasing Office: 290 Heatherden Avenue, Fayetteville, GA 30214

The Dahl

The Dahl Cottage features 3 bedrooms and 3.5 bathrooms with a front porch. The main floor features 10' ceilings, a spacious living area that leads to dining area and open kitchen with breakfast bar. Guest bedroom with en-suite bath is just beyond the kitchen. The second floor offers an owner's suite, second bedroom, full bath, flex area perfect for an office and convenient laundry.



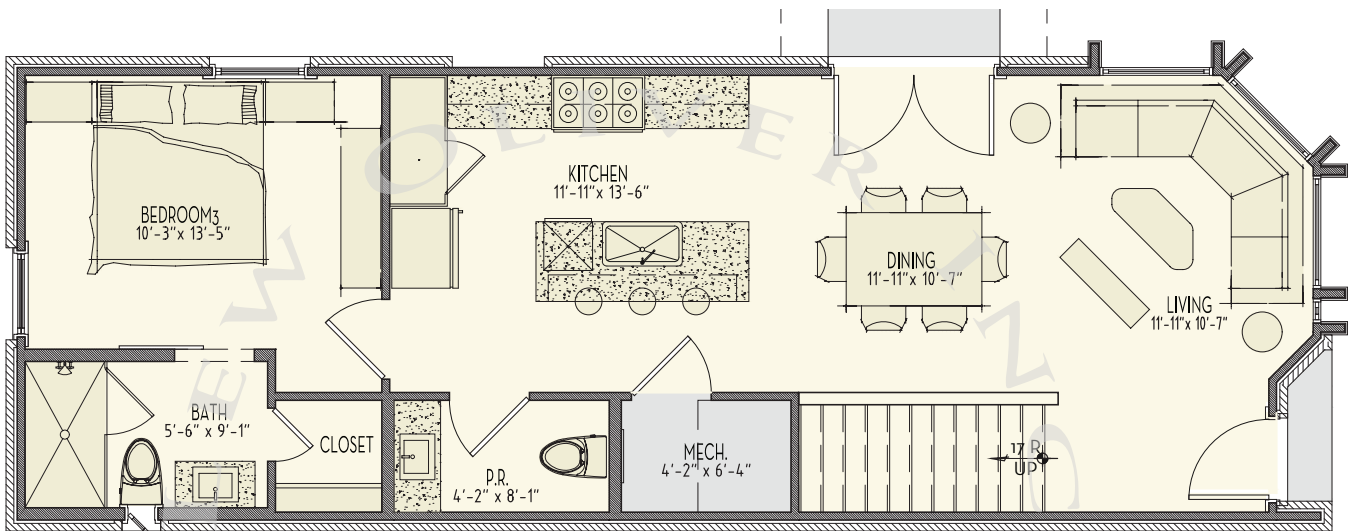
678.519.1008 | Trilith.com



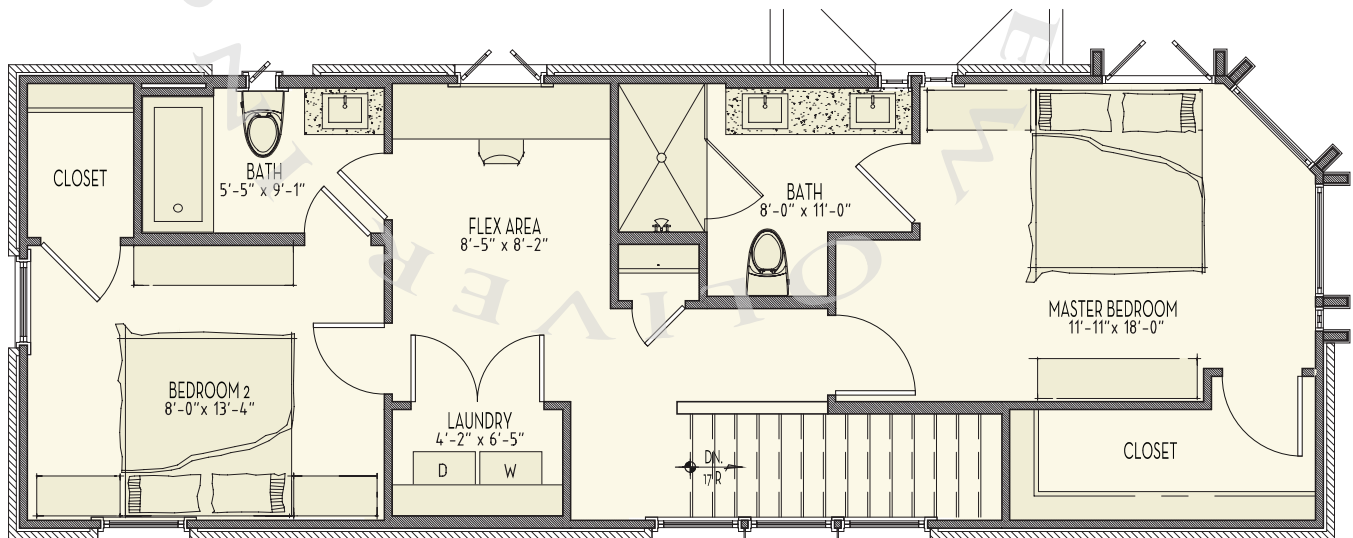
The Dahl

3 Bedrooms & 3.5 Baths | 1,667 sq. ft.*

- 10' ceilings on main
- Open floor plan
- Gourmet kitchen
- Bedroom on main
- Covered front porch
- Trilith green building certification
- Geothermal HVAC system
- Prewired for electric vehicle charging station
- Professional landscaping



1st Floor



2nd Floor

* sq. ft. various upon elevation

678.519.1008 | Trilith.com