



TRILITH

Sales & Leasing Office: 290 Heatherden Avenue, Fayetteville, GA 30214

## The Bellamy

The 4 bedroom, 3.5 bathroom, three-story Bellamy Village home has an impressive floor plan. The open second floor with 10' ceilings is perfect for entertaining offering a large living room with fireplace that opens to wrap around balcony, chef's kitchen with breakfast bar and walk-in pantry, adjacent dining area, powder room and convenient laundry. The third floor offers a master suite with walk-in, 2 additional bedrooms, a bathroom and flex space. The first floor features a lock-out guest suite. Each level of the home is elevator capable. The two-car garage conveniently enters into the lower level.



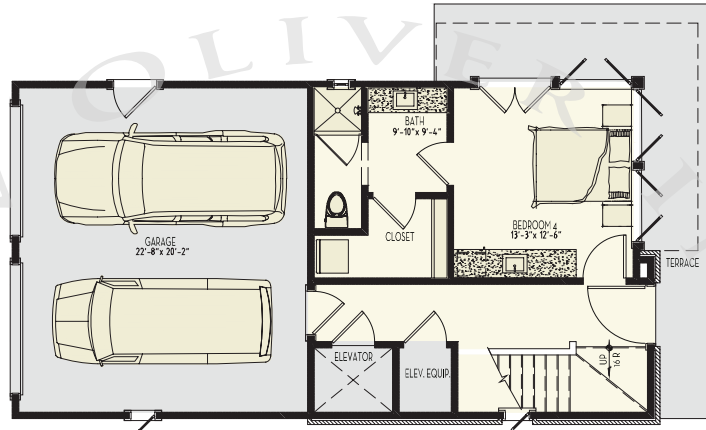
678.519.1008 | Trilith.com



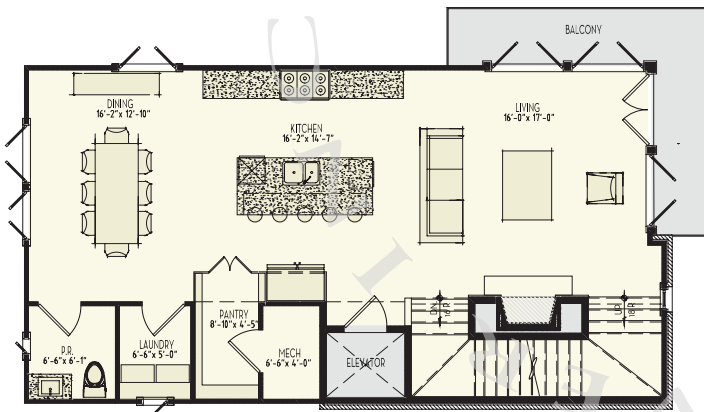
# The Bellamy

4 Bedrooms & 3.5 Baths | 2,633 sq. ft.

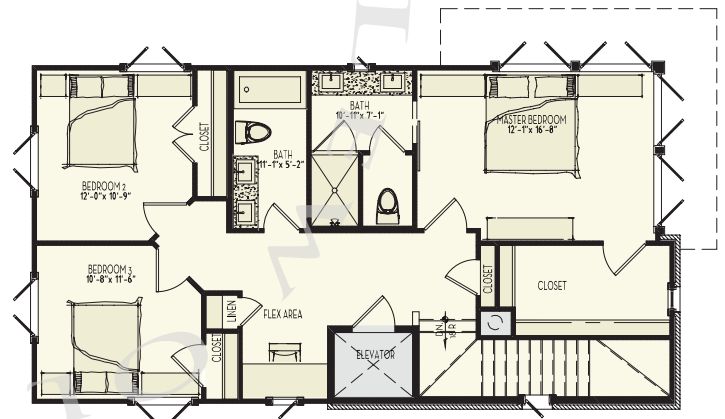
- 10' ceilings on main
- Gourmet kitchen
- Fireplace
- Private front terrace
- Wrap around second floor balcony
- Lock-out guest suite option
- Elevator capable
- 2-car attached garage
- Trilith forest green building certification
- Geothermal HVAC system
- Prewired for electric vehicle charging station
- Professional landscaping



1st Floor



2nd Floor



3rd Floor

678.519.1008 | Trilith.com