

WEST COBB, GEORGIA

KYLE FARM

ADD TO LIFE | EST 2016

YORKTOWNE



ELEVATION A

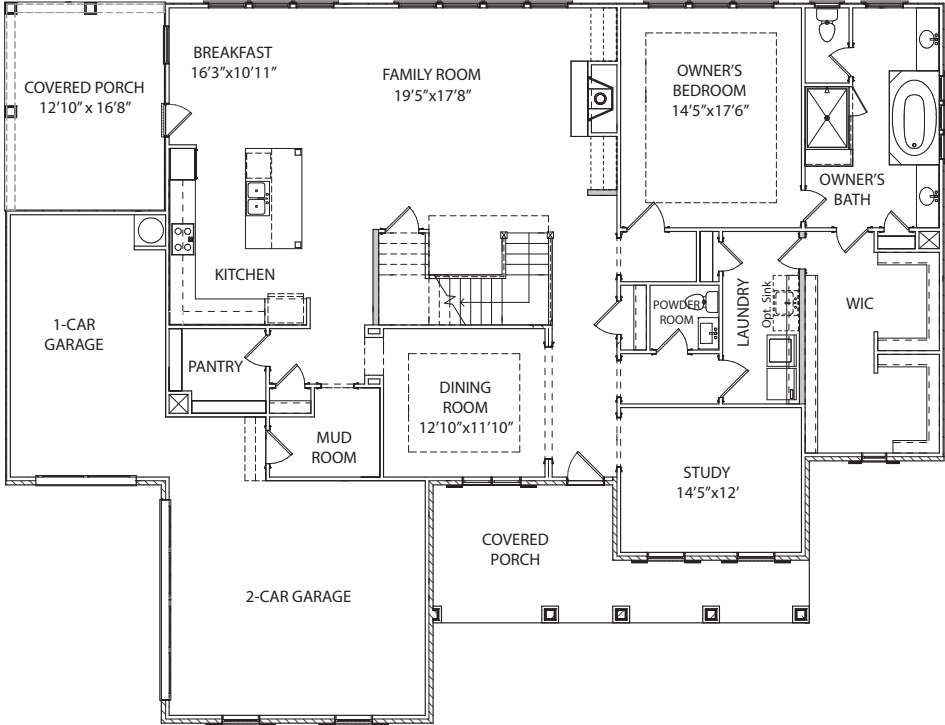
ELEVATION B

4 BEDROOM | 3.5 BATH | 3,604 SQUARE FEET

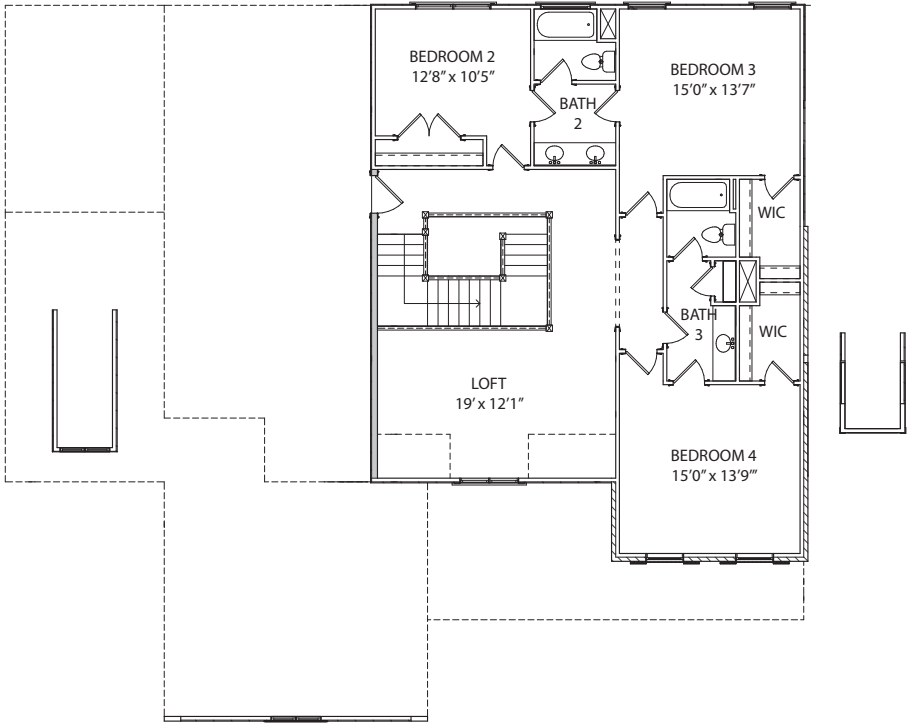
YORKTOWNE

4 BEDROOM | 3.5 BATH | 3,604 SQUARE FEET

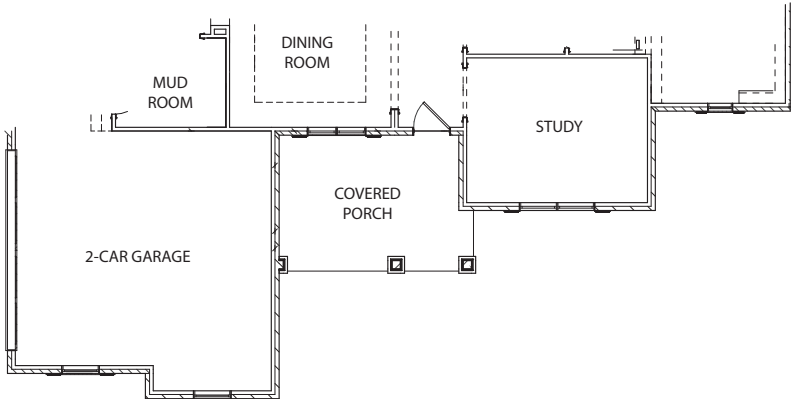
FLOORPLAN



FIRST FLOOR PLAN - A

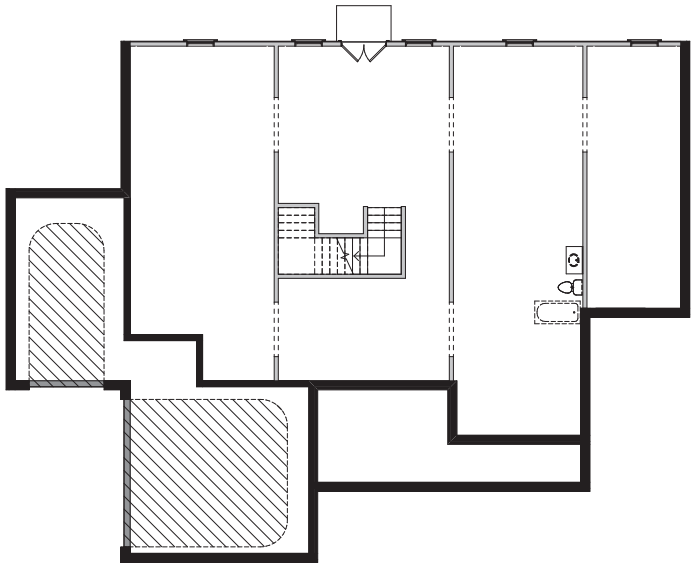


SECOND FLOOR PLAN - A & B

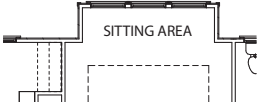


FIRST FLOOR PLAN - B

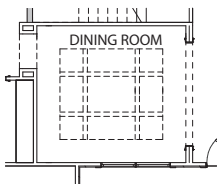
OPTIONS



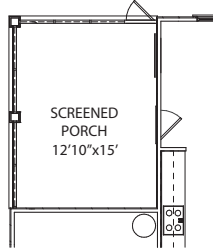
OPT. BASEMENT



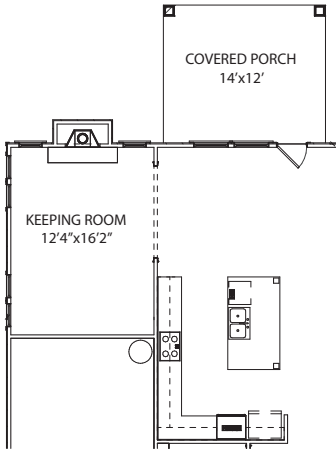
OPT. SITTING AREA
IN OWNER'S SUITE



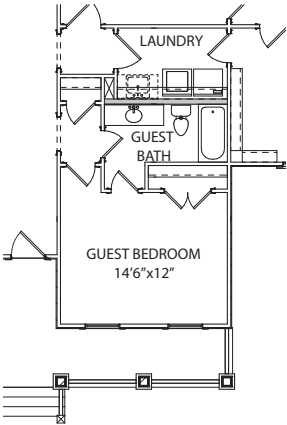
OPT. COFFERED CEILING
IN DINING ROOM



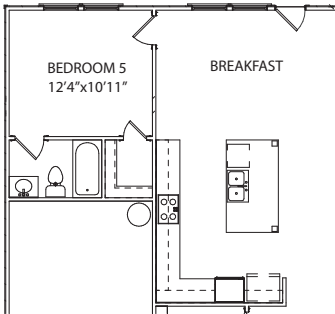
OPT. SCREENED PORCH



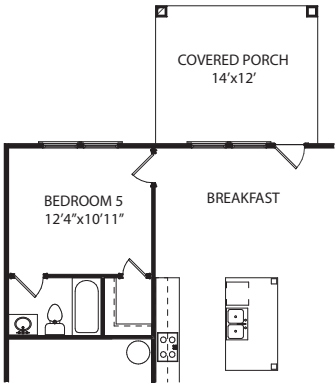
OPT. KEEPING ROOM WITH
OPT. COVERED PORCH



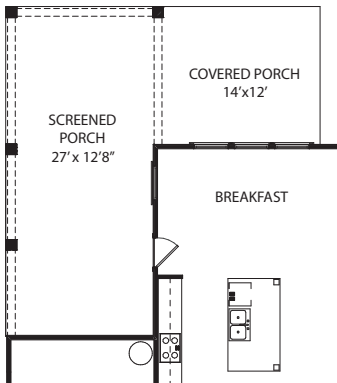
OPT. GUEST BEDROOM
WITH 4TH BATH
IN LIEU OF STUDY



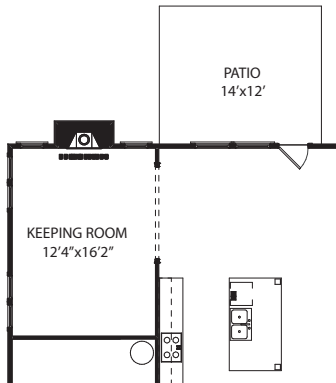
OPT. BEDROOM 5 WITH BATH 5



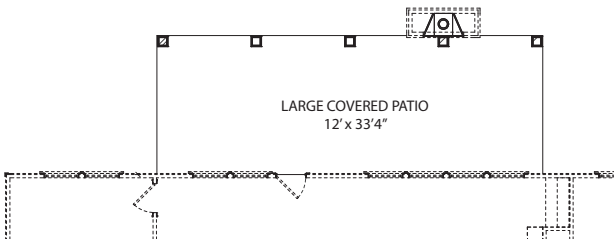
OPT. BEDROOM 5 WITH BATH 5 AND
OPT. COVERED PORCH



OPT. SCREENED PORCH WITH
OPT. COVERED PORCH



OPT. KEEPING ROOM WITH PATIO



OPT. LARGE COVERED PATIO

PATRICKMALLOY
COMMUNITIES

4987 Kyle Drive, Powder Springs, Georgia 30127 | 770-254-5401 | PMCommunities.com

All exterior renderings are artist concept. All plans and dimensions are approximate and subject to change without notice. Plans and room dimensions may vary accordingly to elevation. All information is believed to be accurate but is not warranted and subject to errors, omissions, changes or withdrawal without notice. Equal Housing Opportunity.

BERKSHIRE
HATHAWAY
HomeServices

Georgia
Properties

NEW HOMES DIVISION
CONDOS • SINGLE FAMILY • TOWNHOMES

