

WEST COBB, GEORGIA

# KYLE FARM

ADD TO LIFE | EST 2016

## WINCHESTER

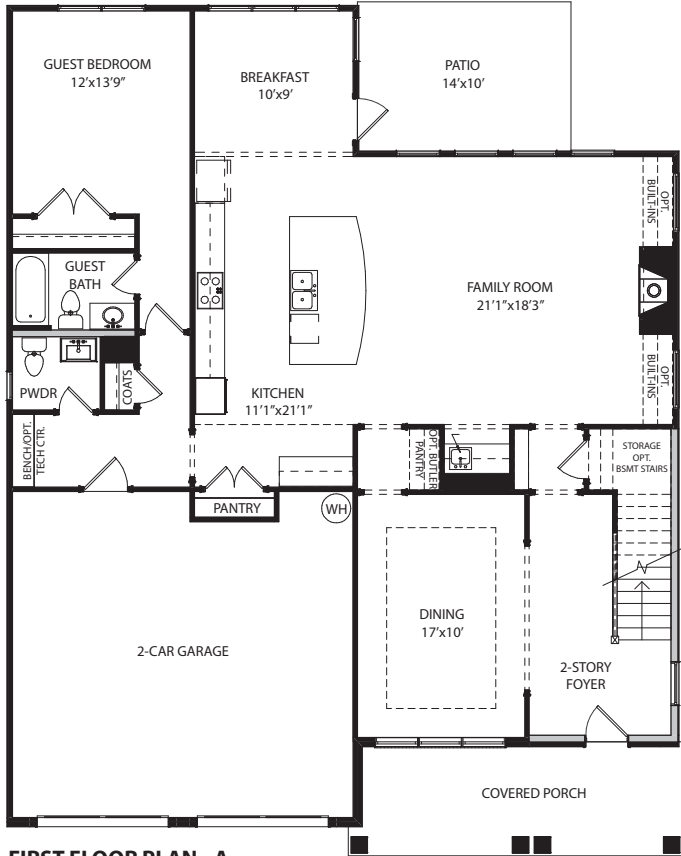


4 BEDROOM | 4.5 BATH | 3,606 SQUARE FEET

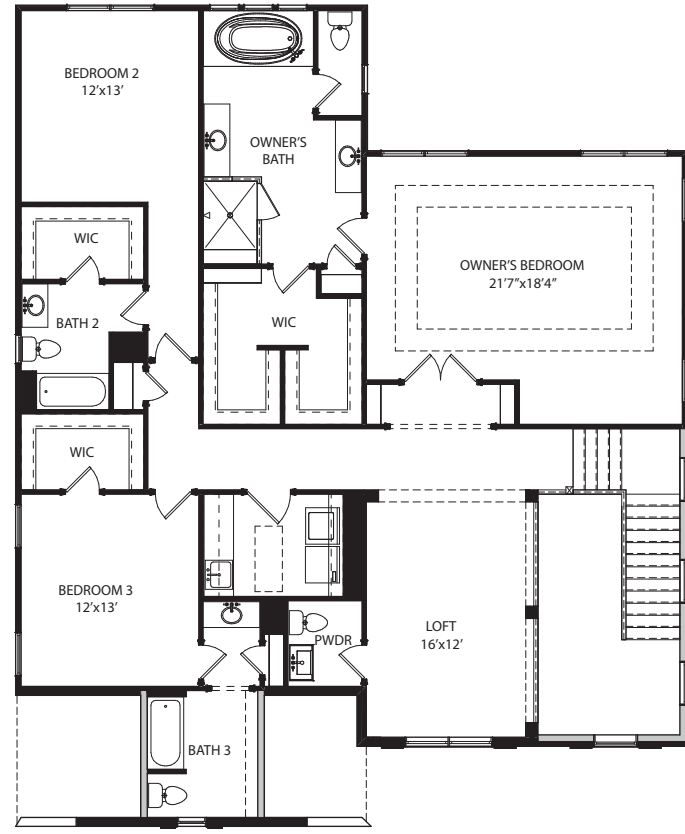
# WINCHESTER

4 BEDROOM | 4.5 BATH | 3,606 SQUARE FEET

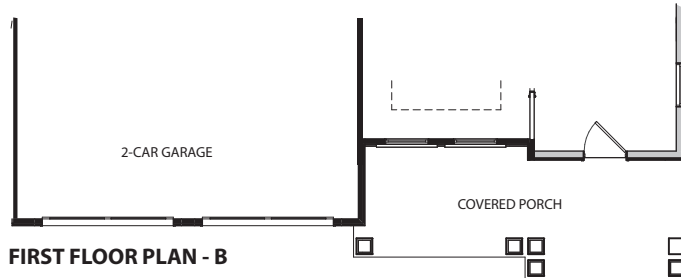
## FLOORPLAN



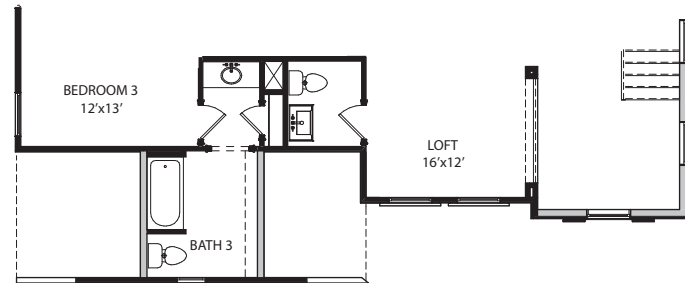
FIRST FLOOR PLAN - A



SECOND FLOOR PLAN - A

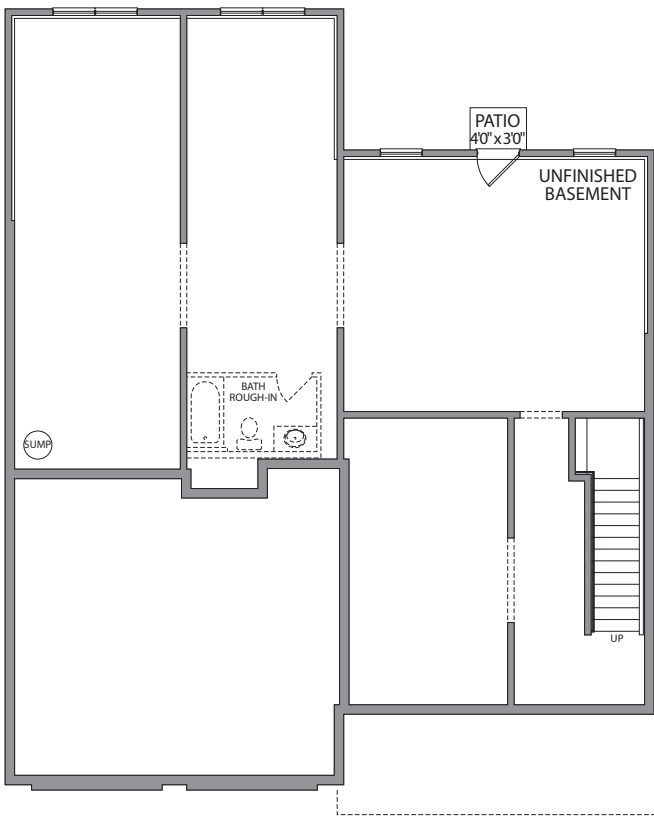


FIRST FLOOR PLAN - B

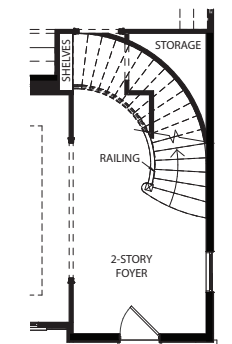


SECOND FLOOR PLAN - B

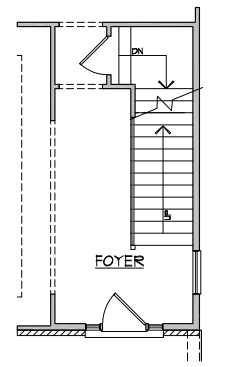
## OPTIONS



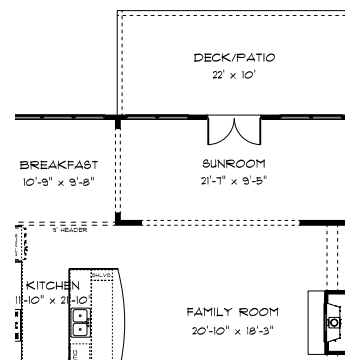
UNFINISHED BASEMENT



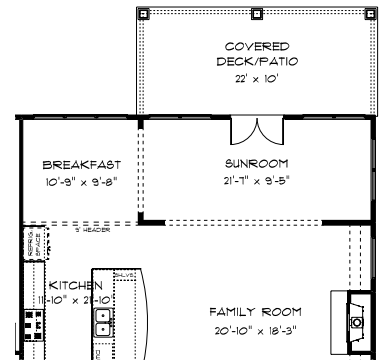
OPT. CURVED STAIRCASE



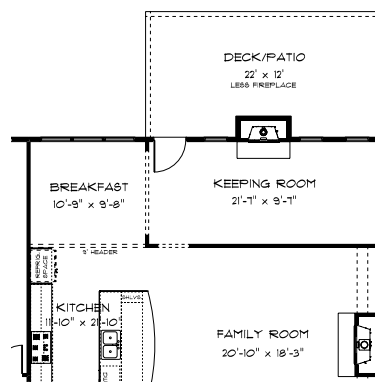
OPT. STAIRS TO BASEMENT



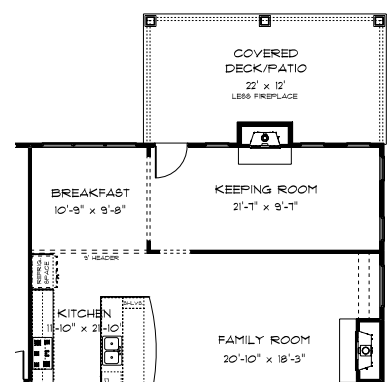
OPT. SUNROOM



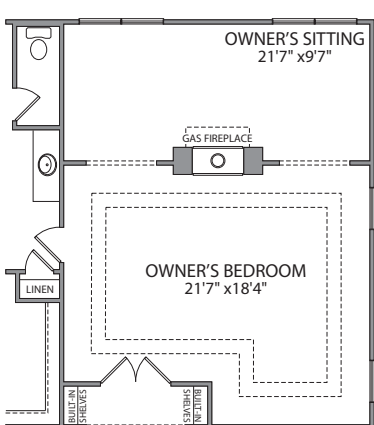
OPT. SUNROOM WITH COVERED DECK/PATIO



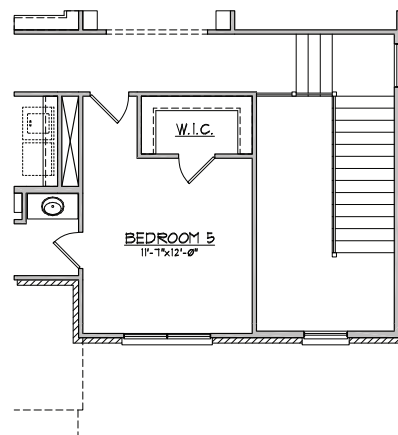
OPT. KEEPING ROOM



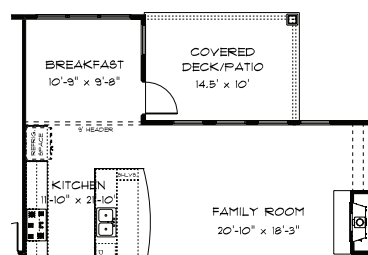
OPT. KEEPING ROOM WITH COVERED DECK/PATIO



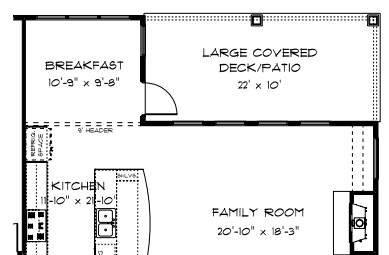
OPT. OWNER'S SITTING AREA & OPT. SUNROOM



OPT. BEDROOM 5 IN LIEU OF LOFT



OPT. COVERED DECK/PATIO



OPT. LARGE DECK/PATIO

PATRICK MALLOY  
C O M M U N I T I E S

4987 Kyle Drive, Powder Springs, Georgia 30127 | 770-254-5401 | PMCommunities.com

All exterior renderings are artist concept. All plans and dimensions are approximate and subject to change without notice. Plans and room dimensions may vary accordingly to elevation. All information is believed to be accurate but is not warranted and subject to errors, omissions, changes or withdrawal without notice. Equal Housing Opportunity.

BERKSHIRE | Georgia  
HATHAWAY | Properties  
HomeServices

NEW HOMES DIVISION  
CONDOS • SINGLE FAMILY • TOWNHOMES

