

# CHATHAM



ELEVATION A



ELEVATION B



ELEVATION C

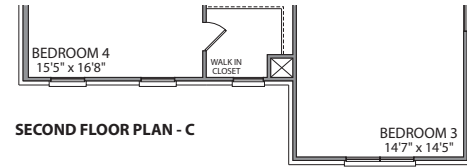
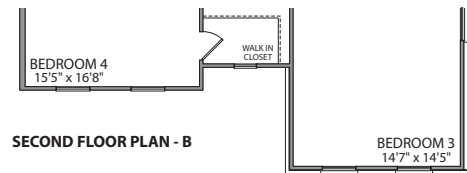
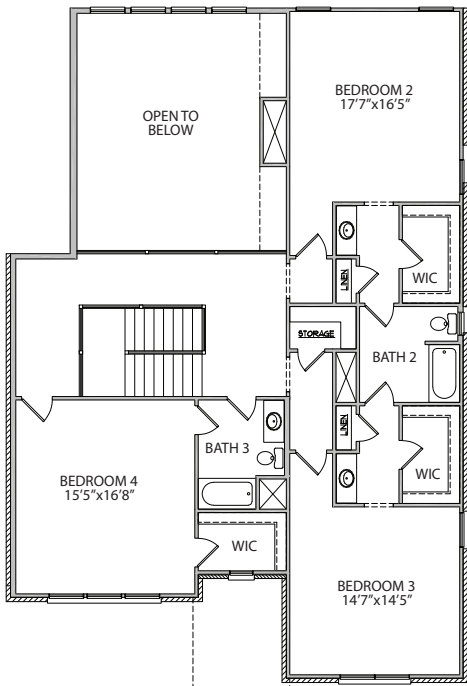
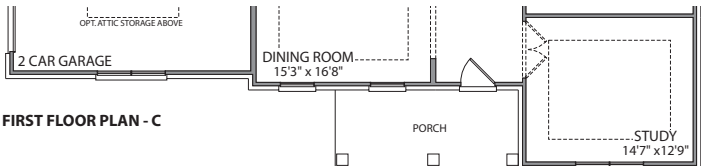
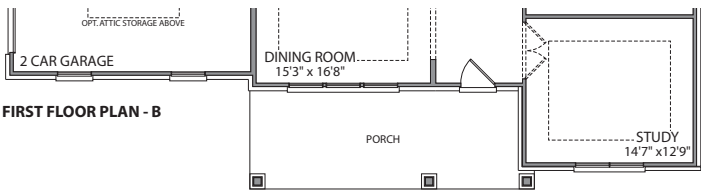
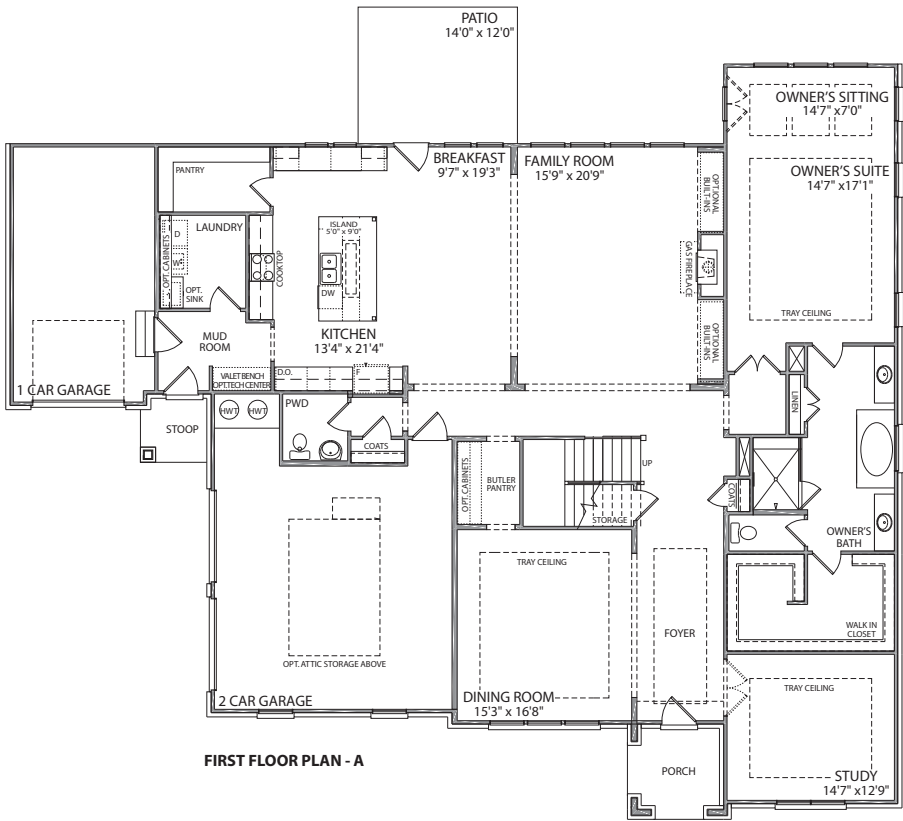
4 BEDROOM | 3.5 BATH | 4,457 SQUARE FEET



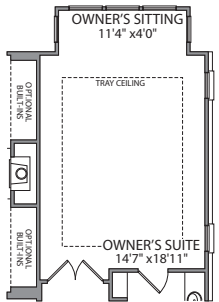
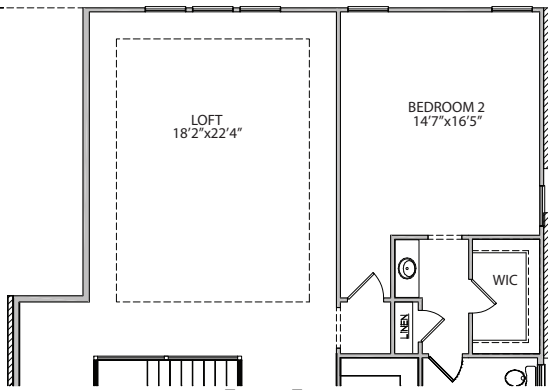
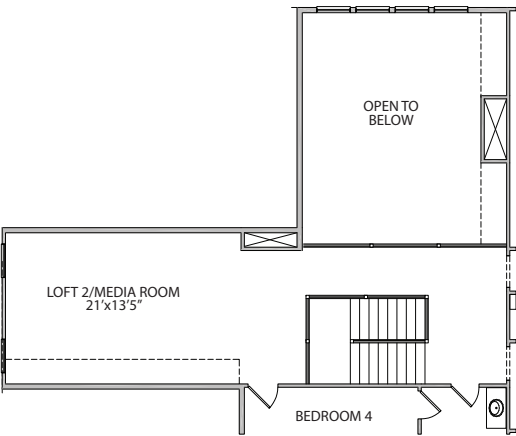
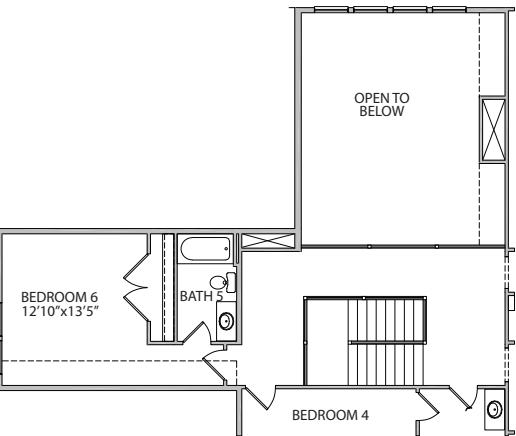
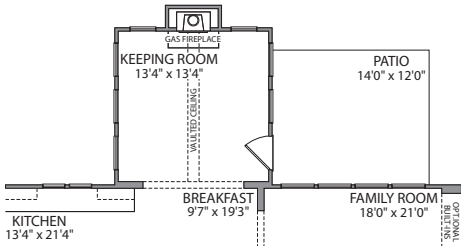
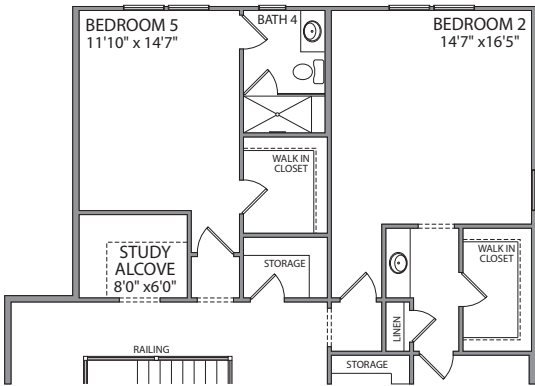
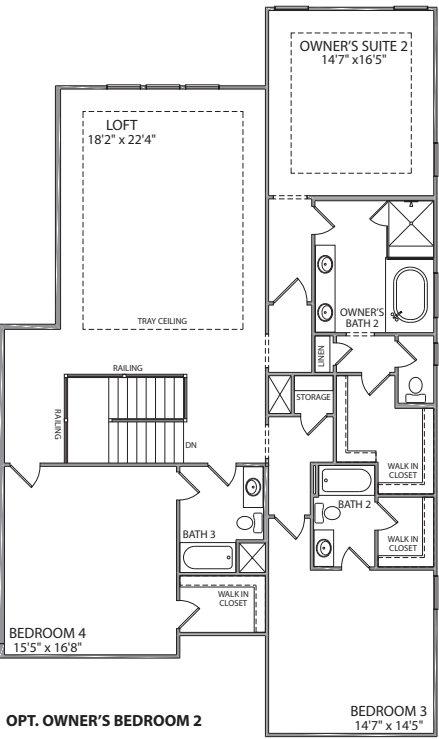
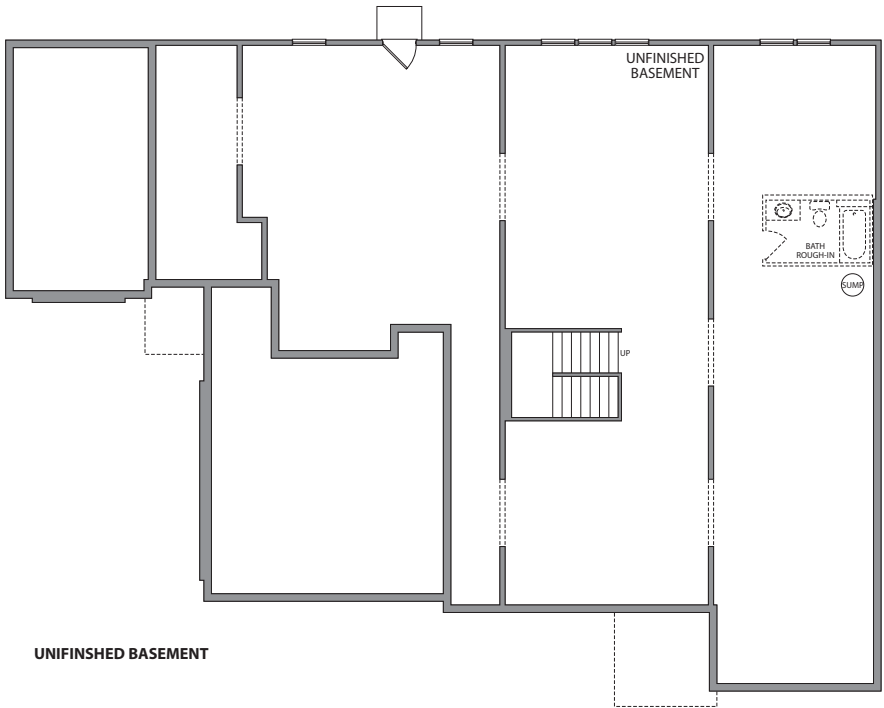
# CHATHAM

4 BEDROOM | 3.5 BATH | 4,457 SQUARE FEET

## FLOORPLAN



## OPTIONS



PATRICKMALLOY  
COMMUNITIES

4987 Kyle Drive, Powder Springs, Georgia 30127 | 770-254-5401 | [PMCommunities.com](http://PMCommunities.com)

All exterior renderings are artist concept. All plans and dimensions are approximate and subject to change without notice. Plans and room dimensions may vary accordingly to elevation. All information is believed to be accurate but is not warranted and subject to errors, omissions, changes or withdrawal without notice. Equal Housing Opportunity.

BERKSHIRE  
HATHAWAY  
HomeServices

Georgia  
Properties

NEW HOMES DIVISION  
CONDOS • SINGLE FAMILY • TOWNHOMES

