

WEST COBB, GEORGIA

KYLE FARM

ADD TO LIFE | EST 2016

ASHBOURNE



ELEVATION A



ELEVATION B



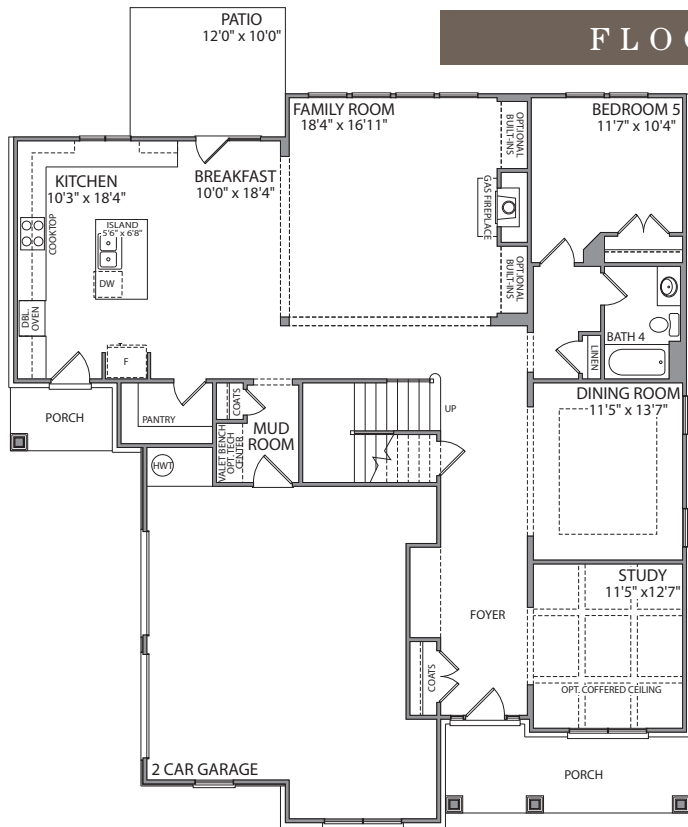
ELEVATION C

5 BEDROOM | 4 BATH | 3,996 SQUARE FEET

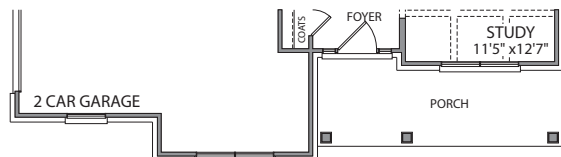
ASHBOURNE

5 BEDROOM | 5 BATH | 3,996 SQUARE FEET

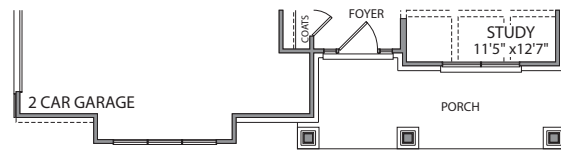
FLOORPLAN



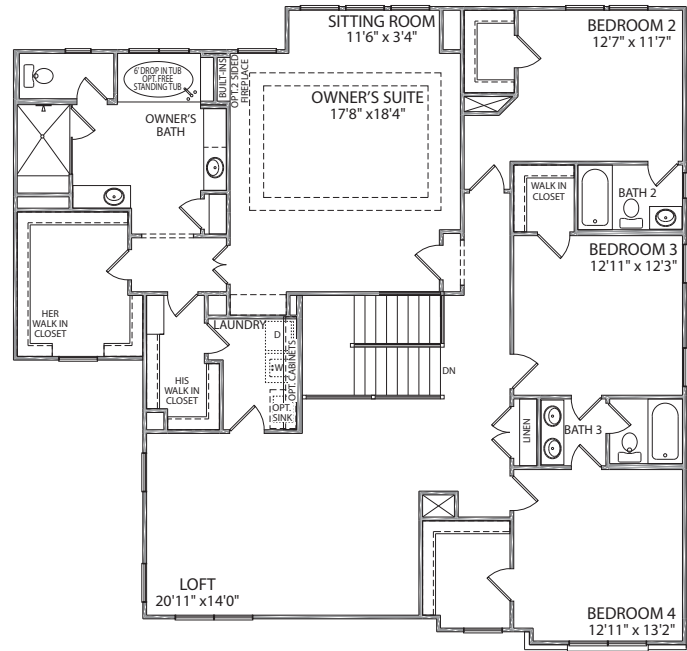
FIRST FLOOR PLAN - A



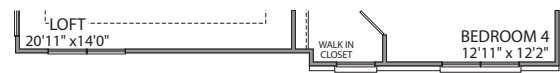
FIRST FLOOR PLAN - B



FIRST FLOOR PLAN - C



SECOND FLOOR PLAN - A

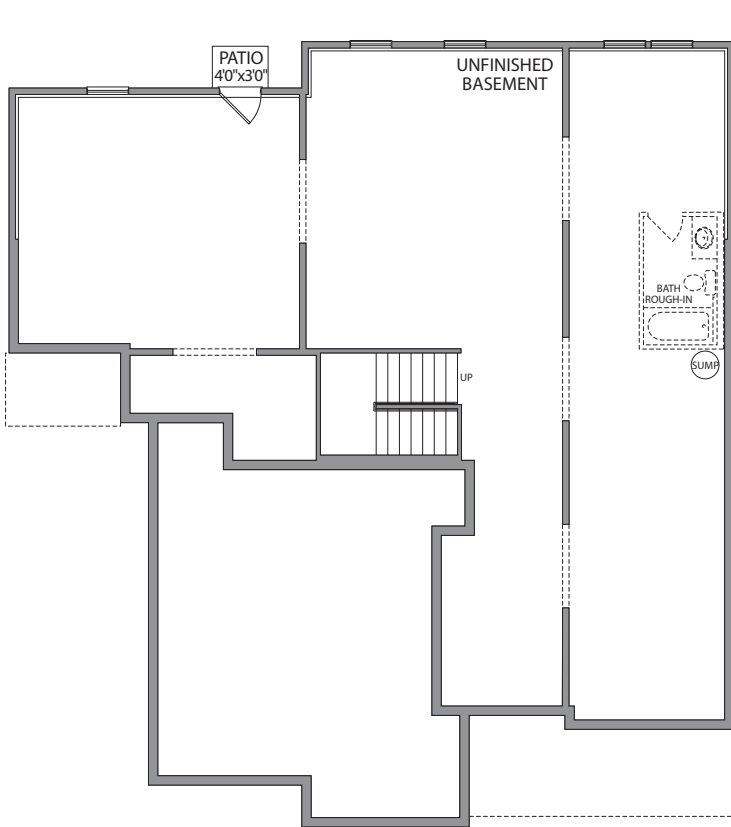


SECOND FLOOR PLAN - B

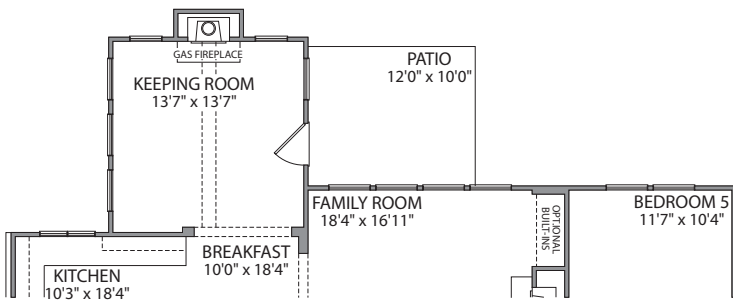


SECOND FLOOR PLAN - C

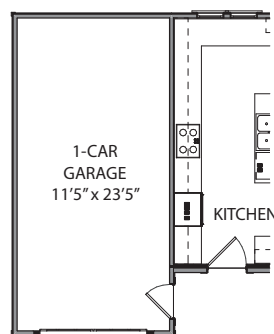
OPTIONS



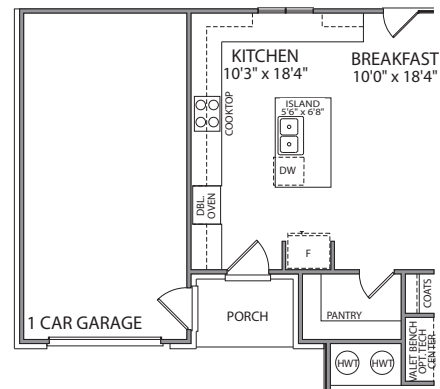
UNFINISHED BASEMENT



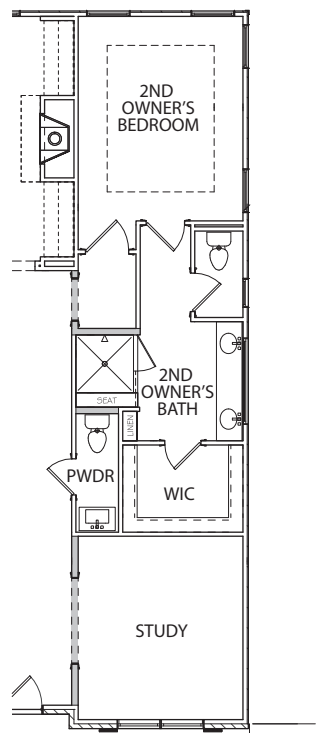
OPT. KEEPING ROOM



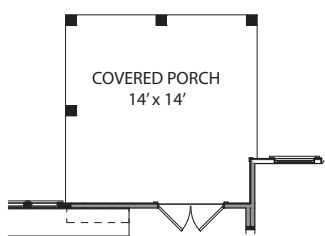
OPT. 1-CAR GARAGE



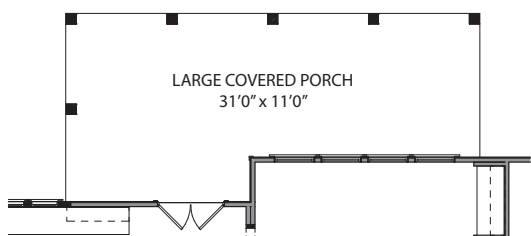
OPT. 3-CAR GARAGE



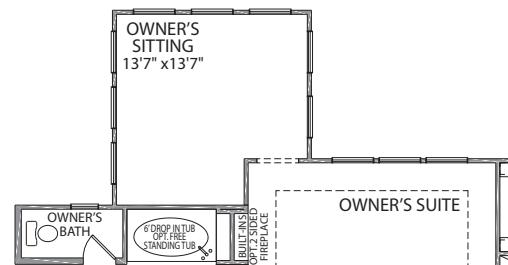
OPT. 2ND OWNER'S SUITE WITH POWDER ROOM ON MAIN IN LIEU OF DINING ROOM



OPT. REAR COVERED PORCH



OPT. LARGE REAR COVERED PORCH



OPT. OWNER'S SITTING

PATRICK MALLOY
C O M M U N I T I E S

4987 Kyle Drive, Powder Springs, Georgia 30127 | 770-254-5401 | PMCommunities.com

All exterior renderings are artist concept. All plans and dimensions are approximate and subject to change without notice. Plans and room dimensions may vary accordingly to elevation. All information is believed to be accurate but is not warranted and subject to errors, omissions, changes or withdrawal without notice. Equal Housing Opportunity.

BERKSHIRE | Georgia
HATHAWAY | Properties
HomeServices

NEW HOMES DIVISION
CONDOS • SINGLE FAMILY • TOWNHOMES

