

WEST COBB, GEORGIA

KYLE FARM

ADD TO LIFE | EST 2016

BUCKINGHAM



ELEVATION A



ELEVATION B



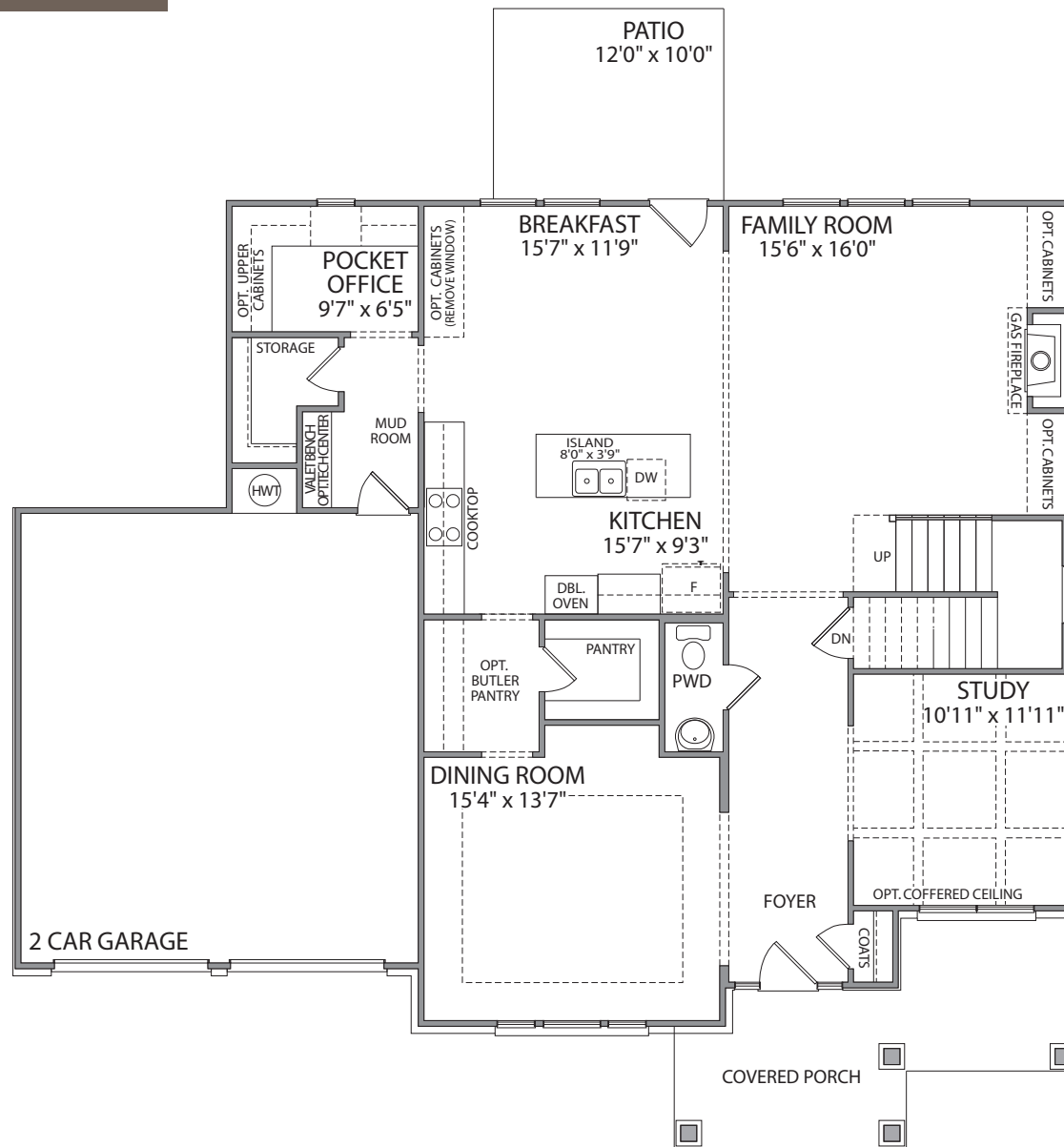
ELEVATION C

4 BEDROOM | 3.5 BATH | 3,490 SQUARE FEET

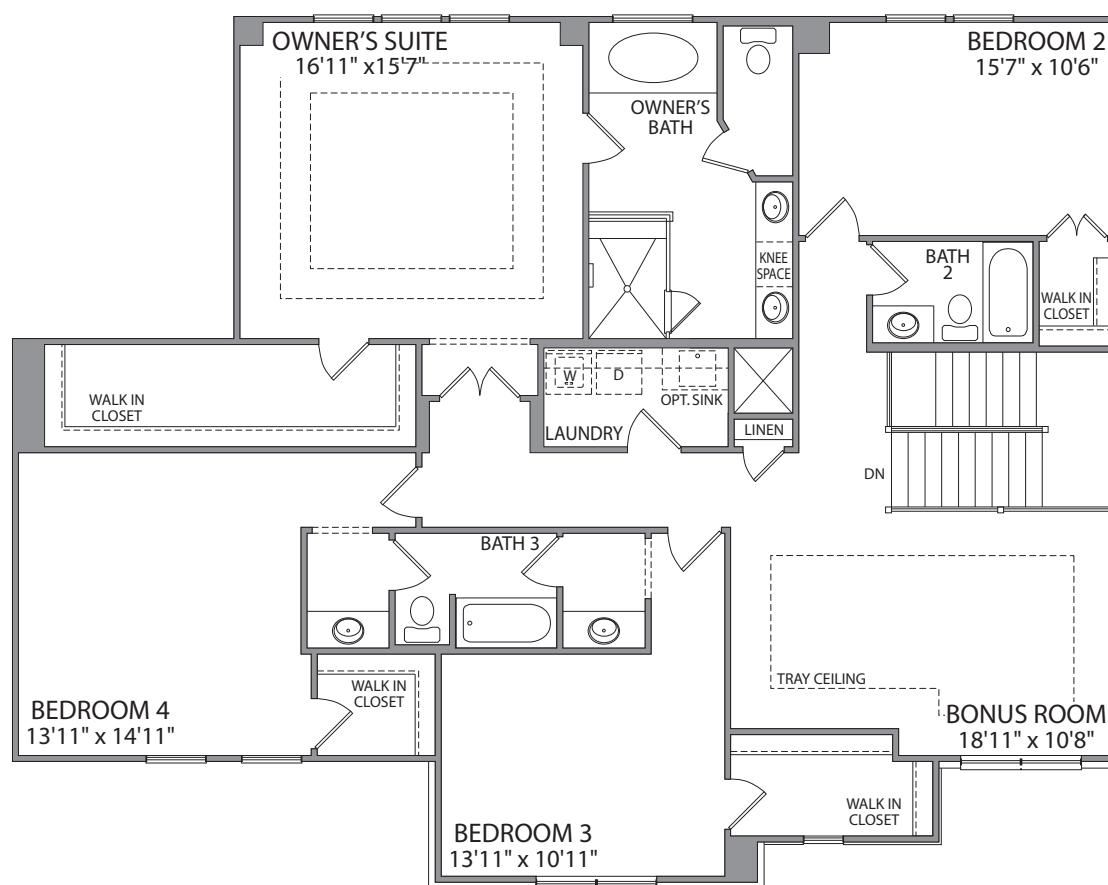
BUCKINGHAM

4 BEDROOM | 3.5 BATH | 3,490 SQUARE FEET

FIRST FLOOR



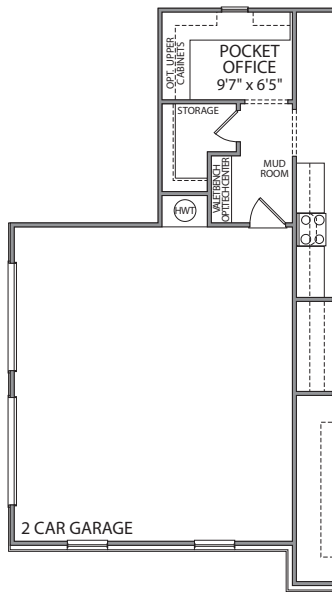
SECOND FLOOR



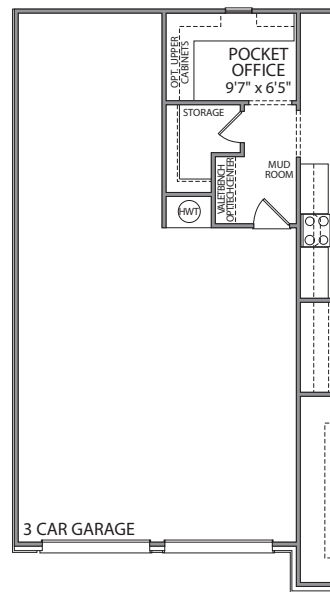
BUCKINGHAM

4 BEDROOM | 3.5 BATH | 3,490 SQUARE FEET

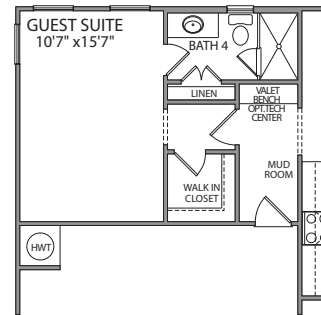
FIRST FLOOR OPTIONS



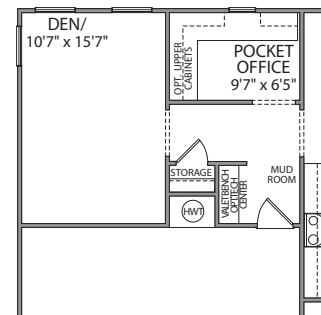
OPT. 2 CAR SIDE LOAD GARAGE
ELEVATION A, B, C



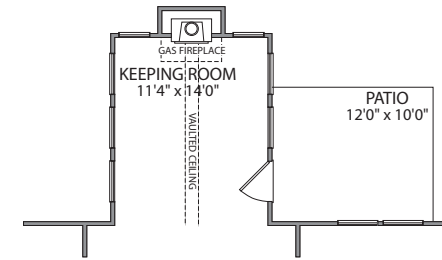
OPT. 3 CAR GARAGE
ELEVATION A, B, C



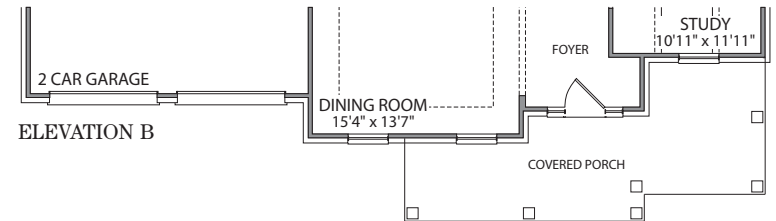
OPT. GUEST SUITE



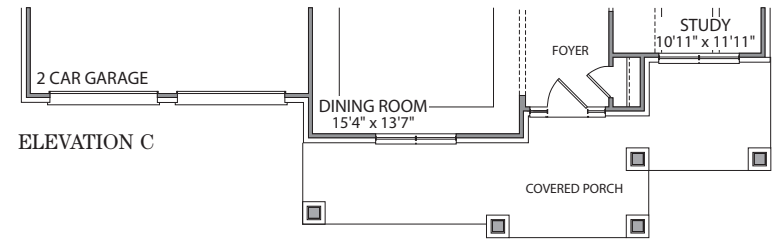
OPT. DEN



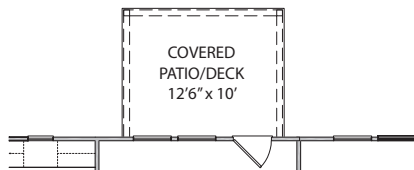
OPT. KEEPING ROOM



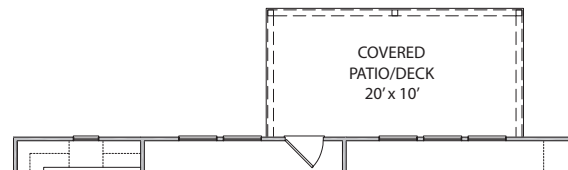
ELEVATION B



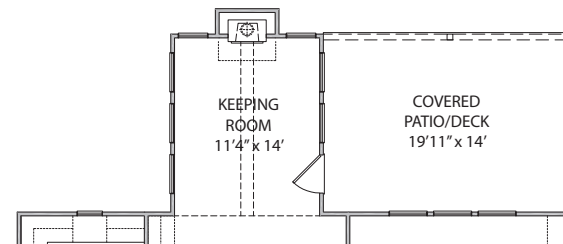
ELEVATION C



OPT. SMALL COVERED PATIO



OPT. LARGE COVERED PATIO

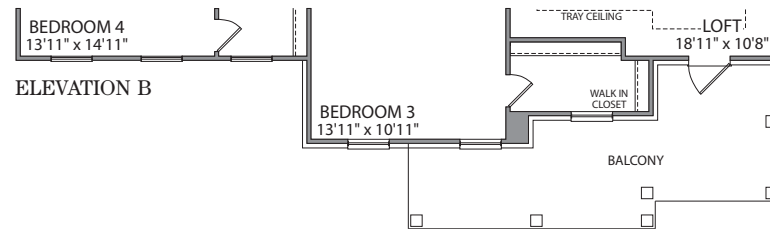


OPT. COVERED PATIO & OPT. KEEPING ROOM

BUCKINGHAM

4 BEDROOM | 3.5 BATH | 3,490 SQUARE FEET

SECOND FLOOR OPTIONS



4987 Kyle Drive, Powder Springs, Georgia 30127 | 770-254-5401 | PMCommunities.com

All exterior renderings are artist concept. All plans and dimensions are approximate and subject to change without notice. Plans and room dimensions may vary according to elevation. All information is believed to be accurate but is not warranted and subject to errors, omissions, changes or withdrawal without notice.
Equal Housing Opportunity.

PATRICK MALLOY
COMMUNITIES

BERKSHIRE
HATHAWAY | Georgia
Properties
HomeServices

NEW HOMES DIVISION
CONDOS • SINGLE FAMILY • TOWNHOMES



PATRICK MALLOY
C O M M U N I T I E S

4987 Kyle Drive, Powder Springs, Georgia 30127 | 770-254-5401 | PMCommunities.com

All exterior renderings are artist concept. All plans and dimensions are approximate and subject to change without notice. Plans and room dimensions may vary accordingly to elevation. All information is believed to be accurate but is not warranted and subject to errors, omissions, changes or withdrawal without notice. Equal Housing Opportunity.

**BERKSHIRE
HATHAWAY** | Georgia
HomeServices Properties

NEW HOMES DIVISION
CONDOS • SINGLE FAMILY • TOWNHOMES

