

## HOMESITE 32 | 1081 Kent Court

5 BEDROOMS 5 FULL BATHS 1 HALF BATH | 5,668 sq.ft

- Modern farmhouse architecture and finishes
- Cul-de-sac homesite overlooking golf course
- Master suite up
- Walk-out main level
- 4 car garage
- Chef's kitchen featuring Wolf appliances, custom cabinets and walk-in pantry
- Four panel glass pocket door leading to outdoor living
- Custom lighting
- Site-finished hardwood floors
- Two laundry rooms
- Mudroom
- En-suite on main level
- Many custom finishes and touches



BERKSHIRE HATHAWAY  
HomeServices

LUXURY  
COLLECTION



LOUDERMILK  
CUSTOM HOMES

NEW HOMES DIVISION  
CONDOS • SINGLE FAMILY • TOWNHOMES



LOUDERMILK  
CUSTOM HOMES

678-578-6766 | LOUDERMILKHOMES.COM | 15967 MANOR CLUB DRIVE MILTON GA, 30004

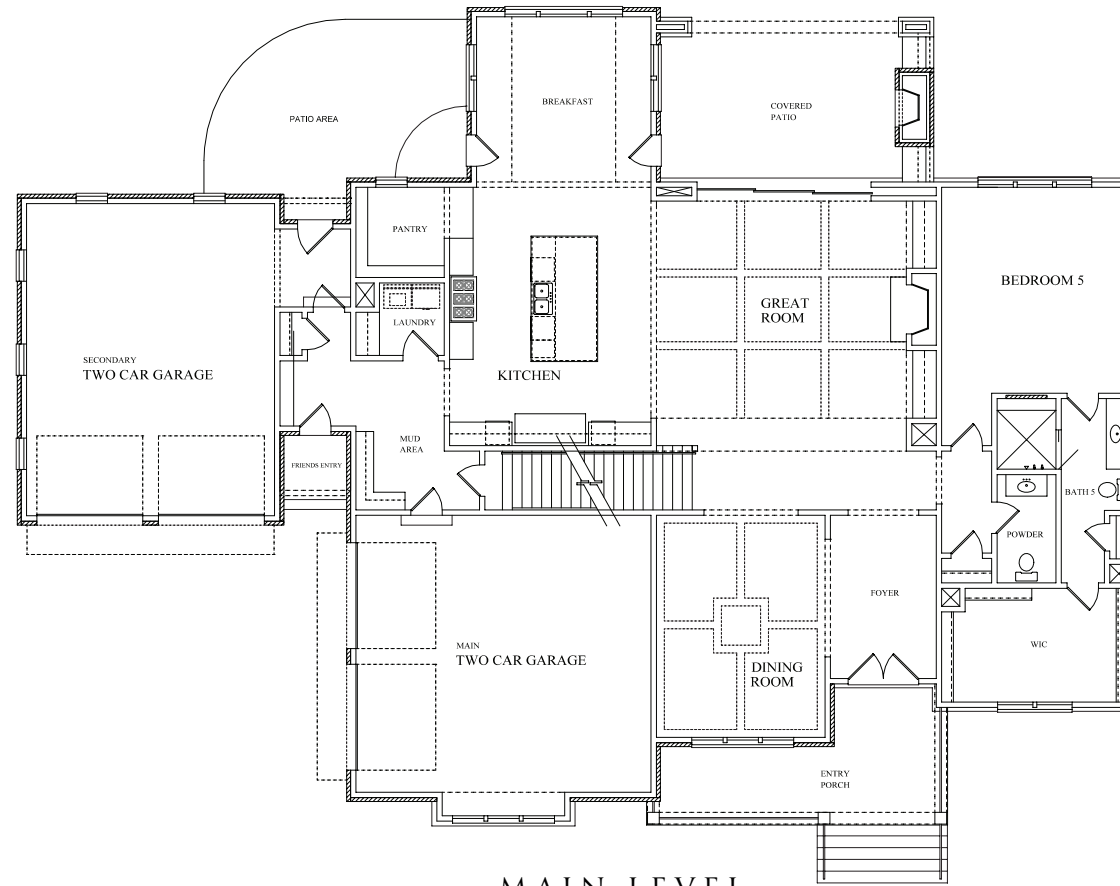
Renderings and architectural plans are artists' conceptual drawings for inspiration purposes. Actual architecture and elevations will vary from the actual plans and homes as built and subject to change. All information is believed to be accurate but is not warranted and is subject to errors, omissions, changes or withdrawal without notice. ©2019 BHH Affiliates, LLC. An independently owned and operated franchisee of BHH Affiliates, LLC. Berkshire Hathaway HomeServices and the Berkshire Hathaway HomeServices symbol are registered service marks of HomeServices of America, Inc. Equal Housing Opportunity.



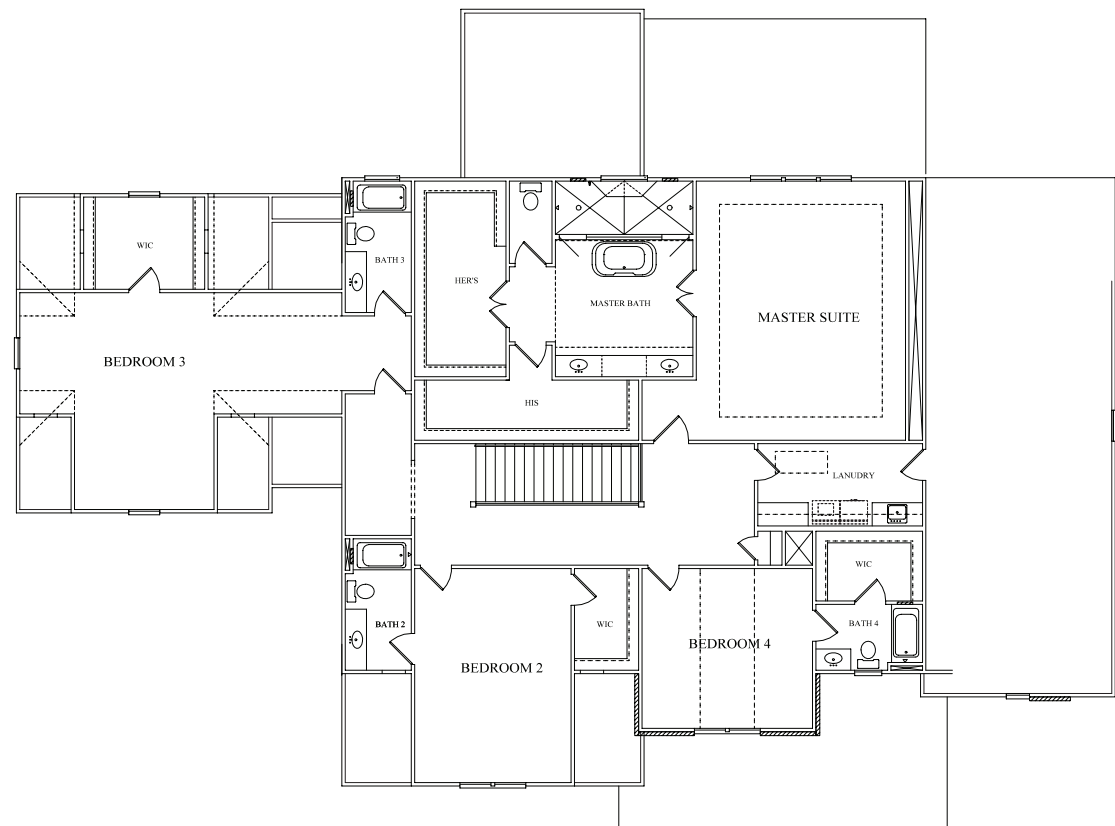


# THE MANOR

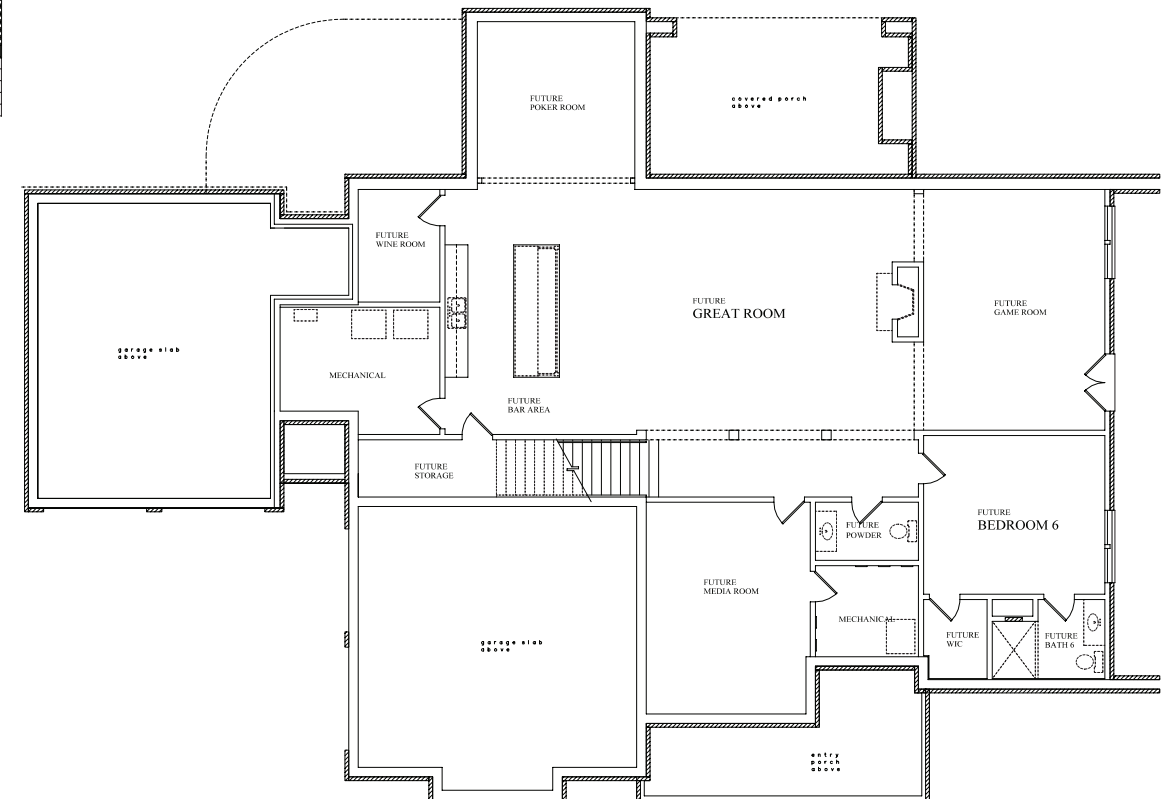
GOLF & COUNTRY CLUB



MAIN LEVEL



UPPER LEVEL



LOWER LEVEL