

HOMESITE 39 | 1053 Summit View Lane
5 BEDROOMS 5 FULL BATHS 1 HALF BATH | 5,6566 sq.ft

- Impressive brick masterpiece with four car garage
- Main level walk-out to private golf course rear yard
- Main level features 12' ceilings, private back office, laundry room, mud room and unfinished elevator shaft
- Amazing chef's kitchen with professional appliances, 70" custom hand-made range hood, 72" wide refrigerator and freezer, large island, walk-in pantry, vaulted breakfast room and opens to the great room
- Fireside great room has recessed sliding glass doors that lead to the covered porch
- Owner's retreat is complimented by the luxurious bath which includes dual entries into the marble shower, and a spacious closet
- Upper level includes 4 private suites all with walk-in closets, spacious laundry room and media room
- Full unfinished daylight terrace level
- Smart Home Tech Package with Control 4 Home Automation with Amazon Alexa



THE MANOR
GOLF & COUNTRY CLUB



LOUDERMILK
CUSTOM HOMES

NEW HOMES DIVISION
CONDOS • SINGLE FAMILY • TOWNHOMES



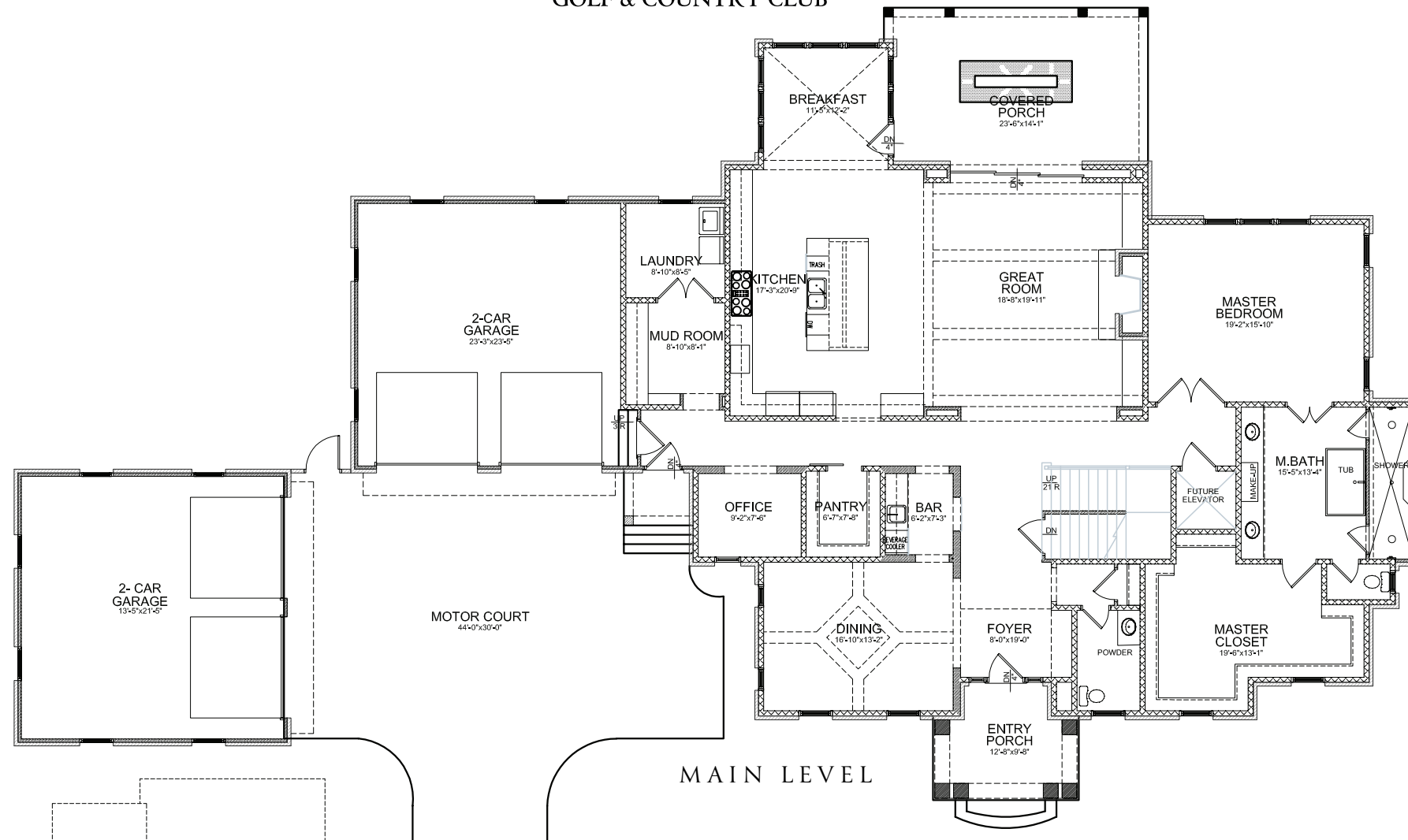
LOUDERMILK
CUSTOM HOMES

678-578-6766 | LOUDERMILKHOMES.COM | 15967 MANOR CLUB DRIVE MILTON GA, 30004

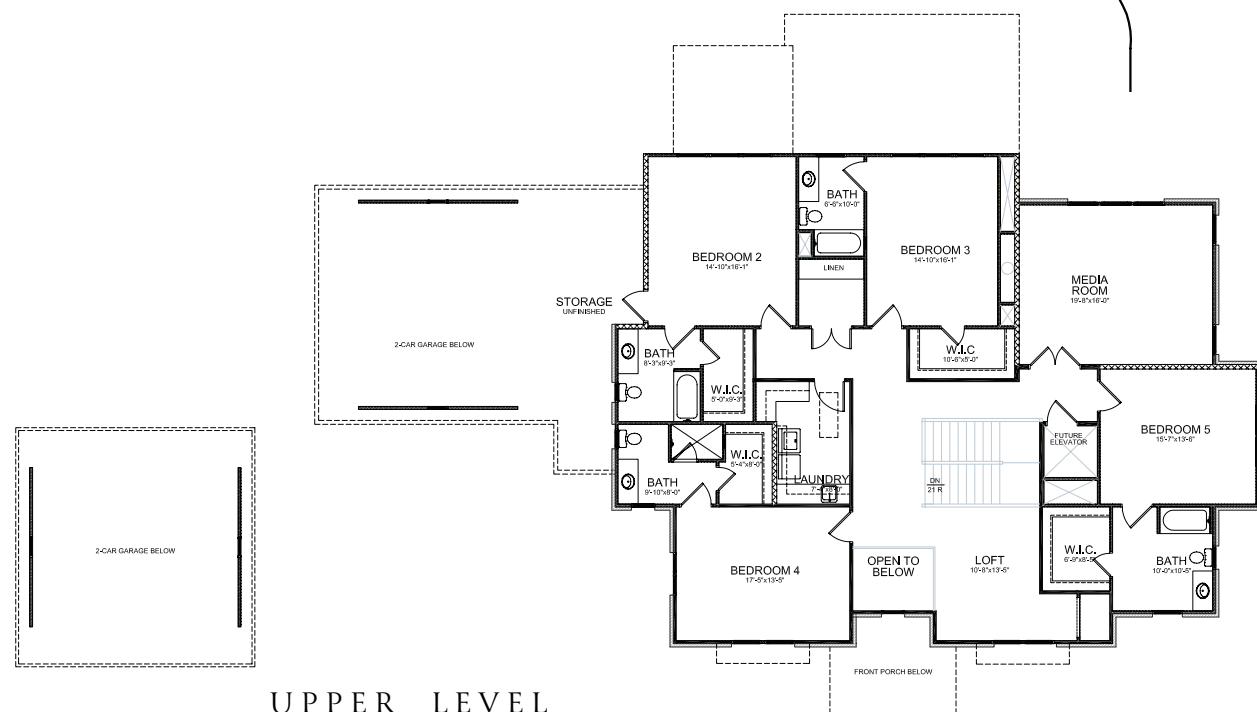


THE MANOR

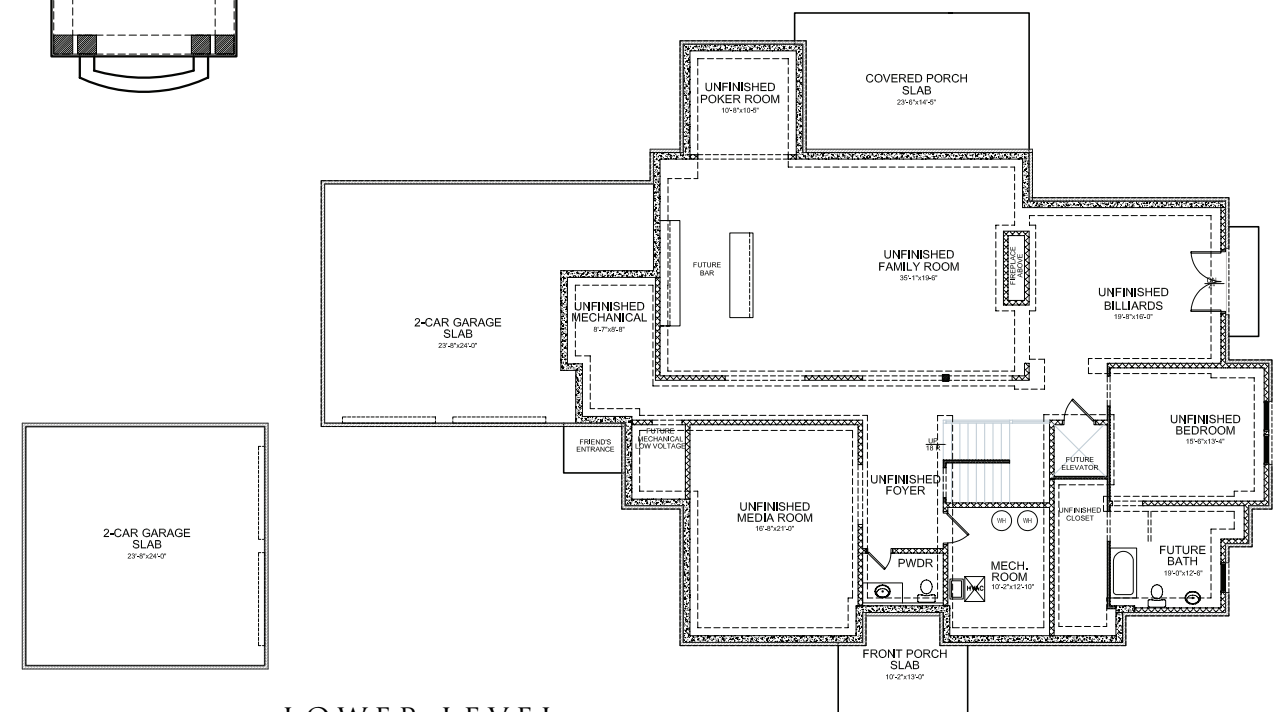
GOLF & COUNTRY CLUB



MAIN LEVEL



UPPER LEVEL



LOWER LEVEL